

Turnover in internal trade in November 2023

Posledná aktualizácia: 08.01.2024 | Počet zobrazení: null



Vydavateľ: null

Tématická oblasť: null

Okruh: null

Dátum publikovania: 08.01.2024

Retail turnover in November remained in slightly negative numbers, but it was the third best result of 2023

The year-on-year decrease in e-shop turnover had the most significant impact on the ongoing decline in retail turnover. The largest turnover share of non-specialized hyper- and supermarkets also did not exceed last year's level, but its decline was only slight, it was the lowest since the beginning of 2023.

Retail turnover¹⁾ decreased by 1.5% year-on-year in November 2023. Its decline in constant prices has lasted continuously for ten consecutive months, but the current November's drop was one of the lowest among the months of 2023.

Up to 6 out of 9 monitored components of the retail trade had a lower turnover than a year ago. The overall negative result of the sector was mostly influenced by a 10.6% turnover decrease in turnover not in stores and also a 6.5% decrease in sales in hobby markets, furniture and consumer electronics stores (specialized stores with other non-household equipment). A double-digit decrease in turnover of specialized stores with food, beverages and tobacco also had a significant impact.

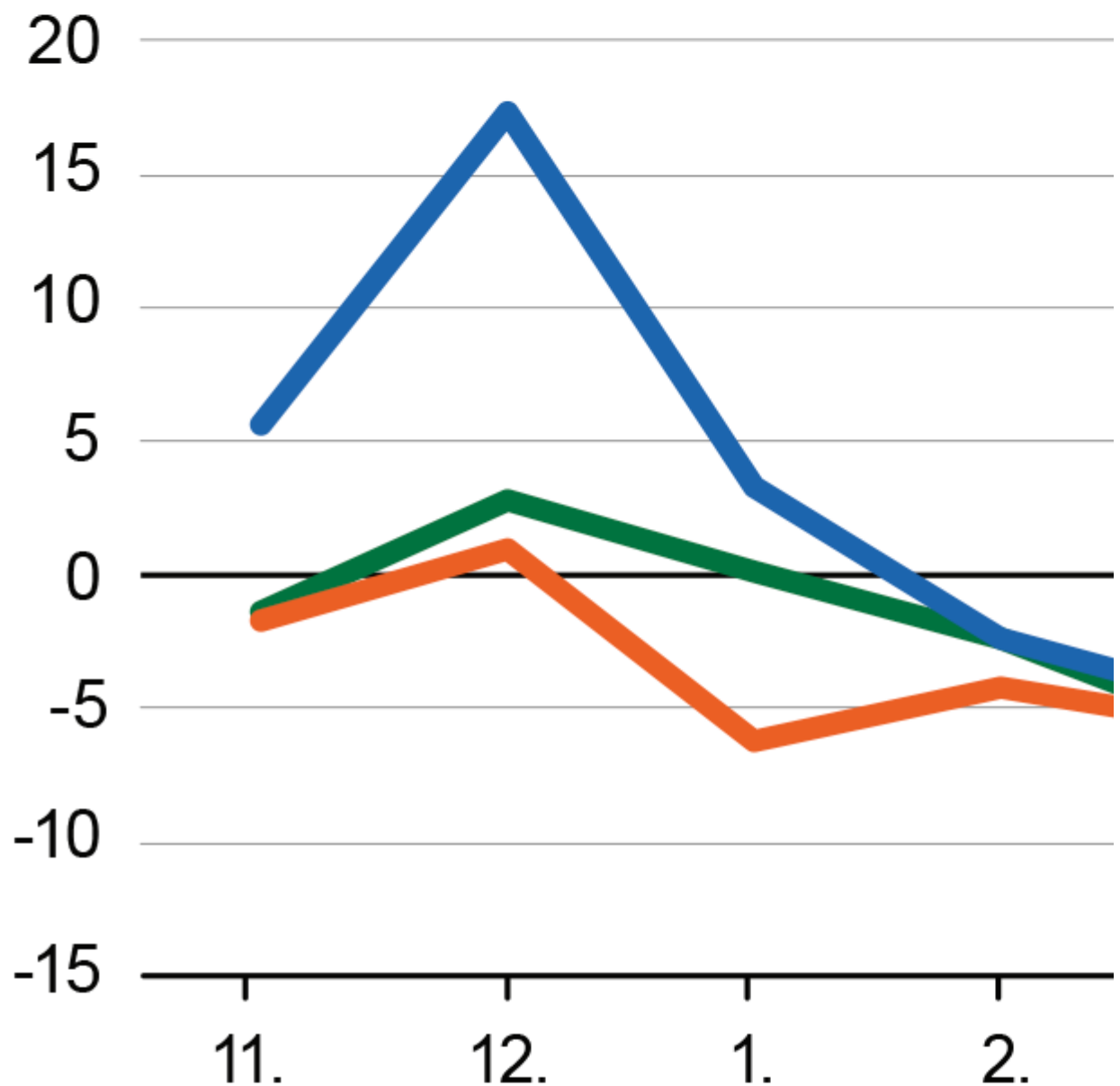
Retail trade achieved a relatively low year-on-year turnover decrease, mainly because the most significant large hyper- and supermarkets (non-specialized stores) maintained almost the same year-on-year turnover. Its decrease in November was only 0.5%, which was the lowest monthly decline and the second best result since the beginning of 2023.

A significantly positive impact on retail trade was also more than a quarter growth in turnover of fuel stores, but this result is significantly influenced by the expansion of the number of news units from the beginning of 2023. Books, toys and sporting goods stores (stores of cultural and recreation goods), and after a longer time also stores with textiles, shoes or drugstores (other specialized stores).



Turnover in retail trade

(at constant prices, year-on-)



2022

2023

-  **Retail**
-  the mc
-  Hyper
-  Specia