



STATISTICAL  
OFFICE  
OF THE SLOVAK  
REPUBLIC



WORLD  
STATISTICS  
DAY

20.10.2020  
CONNECTING  
THE WORLD  
WITH DATA  
WE CAN TRUST

Statistical Office of the SR celebrates **World Statistics Day 2020**



# SLOVAK REPUBLIC IN FIGURES

# 2020

# SLOVAK REPUBLIC IN FIGURES

2020



STATISTICAL  
OFFICE  
OF THE SLOVAK  
REPUBLIC

Publication code: 010120

Domain: Comprehensive publications

Date: October 2020

Statistical Office of the Slovak Republic  
Statistical Products and Services Provision Directorate  
Miletičova 3  
824 67 Bratislava  
Slovak Republic

Information service  
Phone: +421 2 50236 339  
E-mail: [info@statistics.sk](mailto:info@statistics.sk)  
[www.statistics.sk](http://www.statistics.sk)

ISBN 978-80-8121-755-5 (online)  
ISBN 978-80-8121-756-2 (printed version)

---

Copying contents of this publication either whole or its single parts, both in original and adjusted from is possible only unless the Statistical Office of the Slovak Republic gives written permission. Data of this publication can be used only with identification of the source.

# INTRODUCTION

Dear readers,

This year, we have again prepared for you the publication **Slovak Republic in Figures** presenting the most current information about our country this year. We have selected for you indicators from different areas, which will show you how our society has developed, how we have improved and what are new challenges for us.

This product is not about tables with a lot of data. We present interesting information about Slovakia in a simple form, clearly and in an attractive way. We show you not only the current state, but also a comparison over the last ten years using infographics.

Key indicators from European statistics for you. **October 20** is dedicated to official statistics, when catching attention to the importance of available and high quality statistical data is more intensive at international level. In 2020, this day is celebrated for the fifth time not only as **European Statistics Day**, but also worldwide as **World Statistics Day**.

We believe that even in such a simple form we will bring you closer to statistics.

**We care about high quality data!**



Ing. Alexander Ballek  
President  
of the Statistical Office of the SR

A handwritten signature in blue ink that reads "Alexander Ballek". The signature is stylized and written in a cursive-like font.

# METHODOLOGICAL NOTES

## **Statistical classification of economic activities**

SK NACE Rev. 2

- A Agriculture, forestry and fishing
- B Mining and quarrying
- C Manufacturing
- D Electricity, gas, steam and air conditioning supply
- E Water supply; sewerage, waste management and remediation activities
- B-E Industry in total
- F Construction
- G Wholesale and retail trade; repair of motor vehicles and motorcycles
- H Transportation and storage
- I Accommodation and food service activities
- J Information and communication
- K Financial and insurance activities
- L Real estate activities
- M Professional, scientific and technical activities
- N Administrative and support service activities
- O Public administration and defence; compulsory social security
- P Education
- Q Human health and social work activities
- R Arts, entertainment and recreation
- S Other service activities
- T Activities of households as employers; undifferentiated goods- and services-producing activities of households for own use
- U Activities of extraterritorial organizations and bodies

### Used symbols and abbreviations

Macron (-) - the phenomenon did not occur

curr. p. - current prices

con. p. - constant prices

pp - percentage point

ESA - European System of National and Regional Accounts

GDP - gross domestic product

ICT - Information and Communication Technology

LFS - Labour Force Sample Survey

Time series of statistical indicators are compiled to maintain the methodological comparability during the whole monitored period.

The codes of the source tables in the Statistical Office database (DATAcube.) and Eurostat database (selection as of September 25, 2020) are given in the chapters.

Sum and share differences arise from rounding of absolute data.

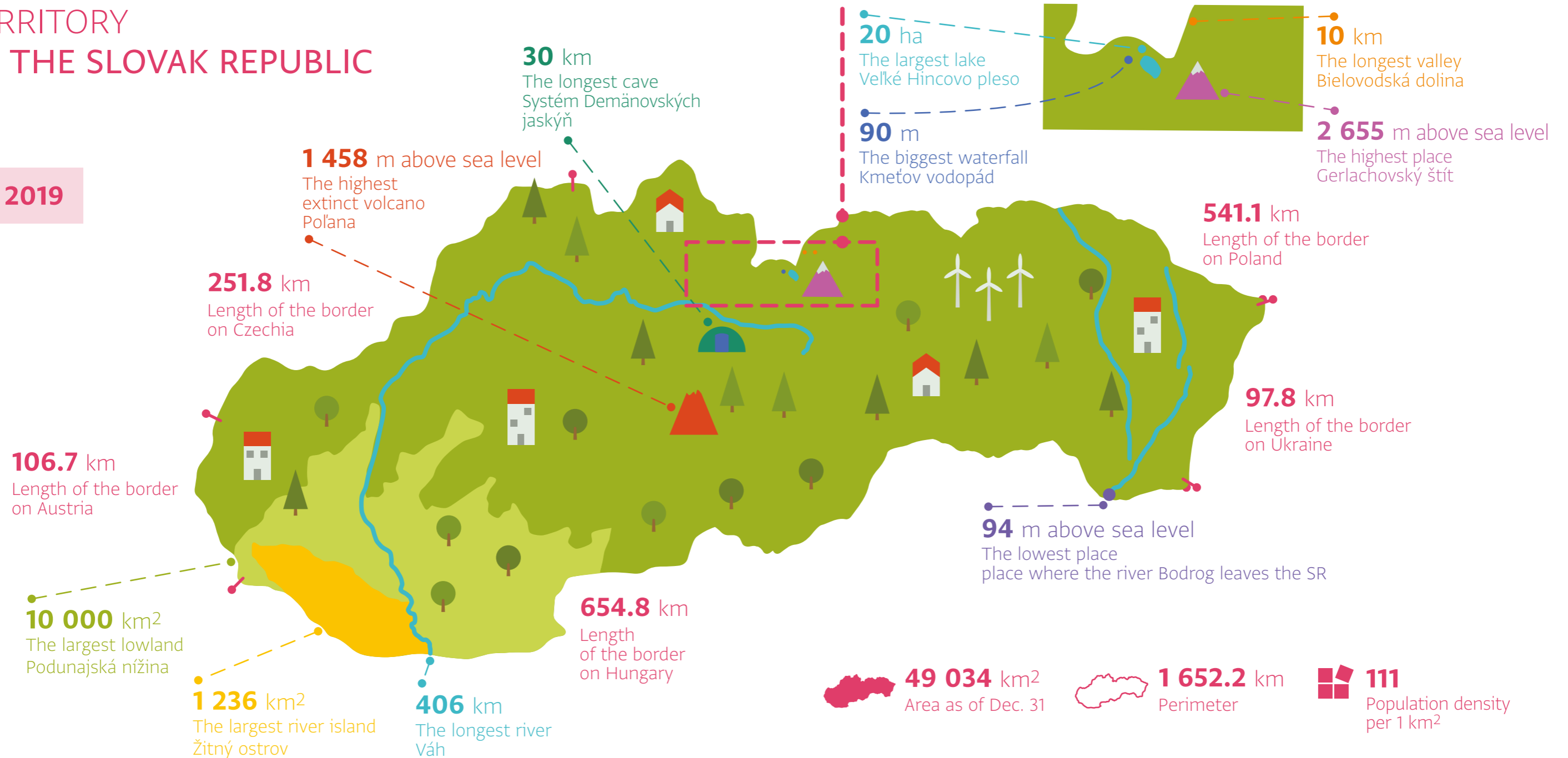
**Data sources: statistical surveys of the SO SR and administrative sources: Geodetic and Cartographic Institute; Slovak Centre of Scientific and Technical Information; National Health Information Centre; Social Insurance Agency; Ministry of Culture of the SR, Ministry of Transport and Construction of the SR; Ministry of Interior of the SR, Ministry of Agriculture and Rural Development of the SR; Ministry of Environment of the SR.**

# CONTENTS

10	TERRITORY OF THE SLOVAK REPUBLIC
12	INDICATORS OF ECONOMIC DEVELOPMENT
16	DEMOGRAPHY AND SOCIAL STATISTICS
18	Average Slovak woman/man in time
20	Population
25	Balance of economic activity of population
28	Earnings
30	Income and expenditure of households
32	Living conditions of population
34	Education
36	Social protection
38	Health
39	Culture
40	A quick glance at the EU
43	MACROECONOMIC STATISTICS
44	Gross domestic product
46	Foreign trade
48	Prices
50	A quick glance at the EU
53	BUSINESS STATISTICS
54	Organizational statistics
57	SECTORAL STATISTICS
58	Agriculture
60	Industry
62	Construction
64	Transport
66	Information and communication, information services
68	Internal trade, accommodation and food service activities
69	Tourism
72	A quick glance at the EU
75	ENVIRONMENT
76	Environment
78	Beautiful Slovakia
81	MULTI-DOMAIN STATISTICS
82	Research and development

# TERRITORY OF THE SLOVAK REPUBLIC

year **2019**

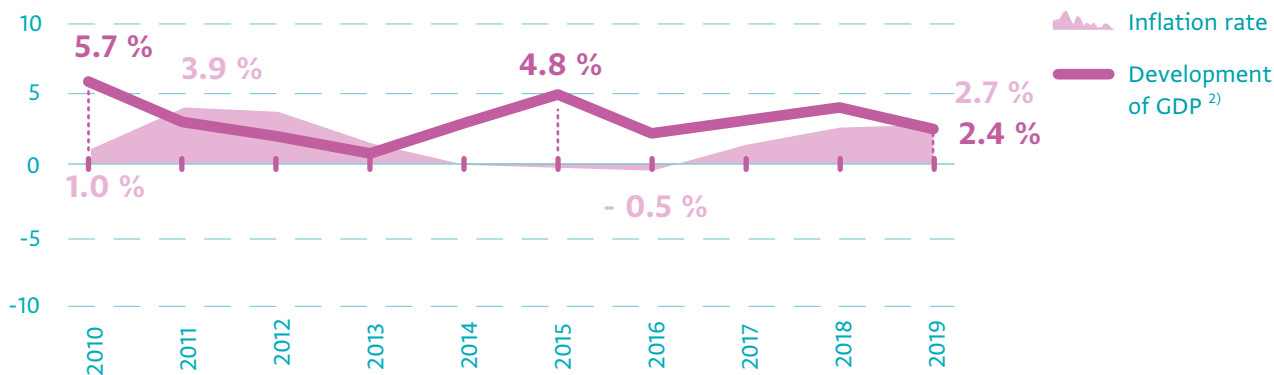




# INDICATORS OF ECONOMIC DEVELOPMENT

	2010	2019
<b>Gross domestic product at current prices (EUR million)</b> <sup>1) 2)</sup>	68 093	94 171
Index of gross domestic product (%) <sup>1) 2) 3)</sup>	106.2	105.1
<b>Gross domestic product at constant prices chain-linked volumes (EUR million)</b> <sup>1) 2) 4)</sup>	70 179	89 295
Index of gross domestic product (%) <sup>1) 2) 3)</sup>	105.7	102.4

## Development of GDP at curr. p. and inflation (year-on-year change in %)



**Year-on-year  
inflation rate in 2019  
reached the level 2.7 %.**

1) ESA 2010 methodology

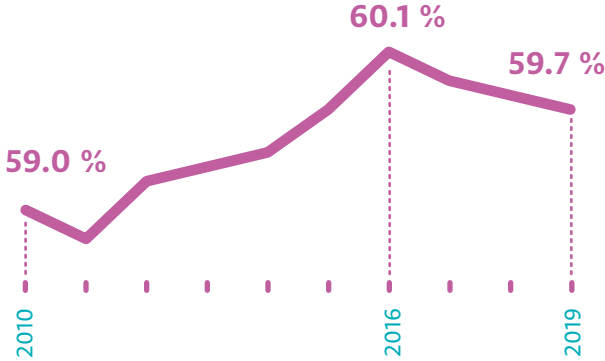
2) 2017 and 2018 data are half-finalized;  
2019 data are estimated (sum of quarters)

3) Previous year = 100

4) Constant prices chain-linked volumes with reference year 2015

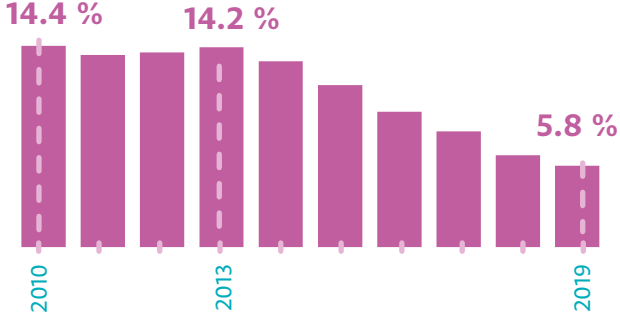
### Economic activity rate

(Labour Force Sample Survey)



### Unemployment rate

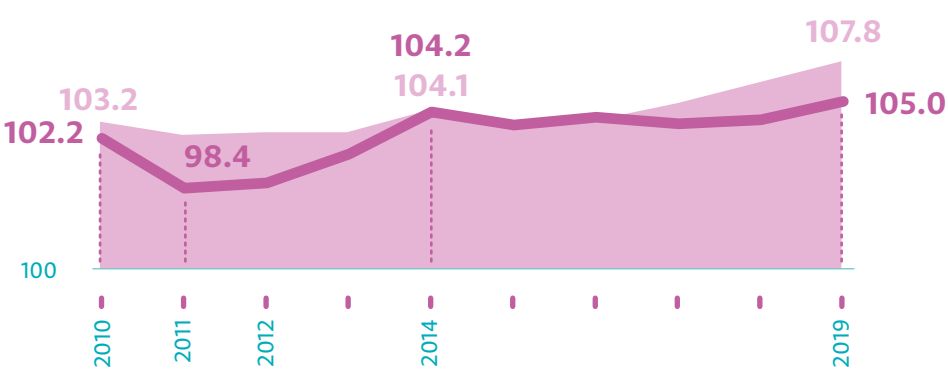
(Labour Force Sample Survey)



Employment rate aged 20 - 64 years by Labour Force Sample Survey reached **73.4 %** in 2019.

**+ 8.7 pp**  
since 2010

### Development of wages - indices (previous year = 100)

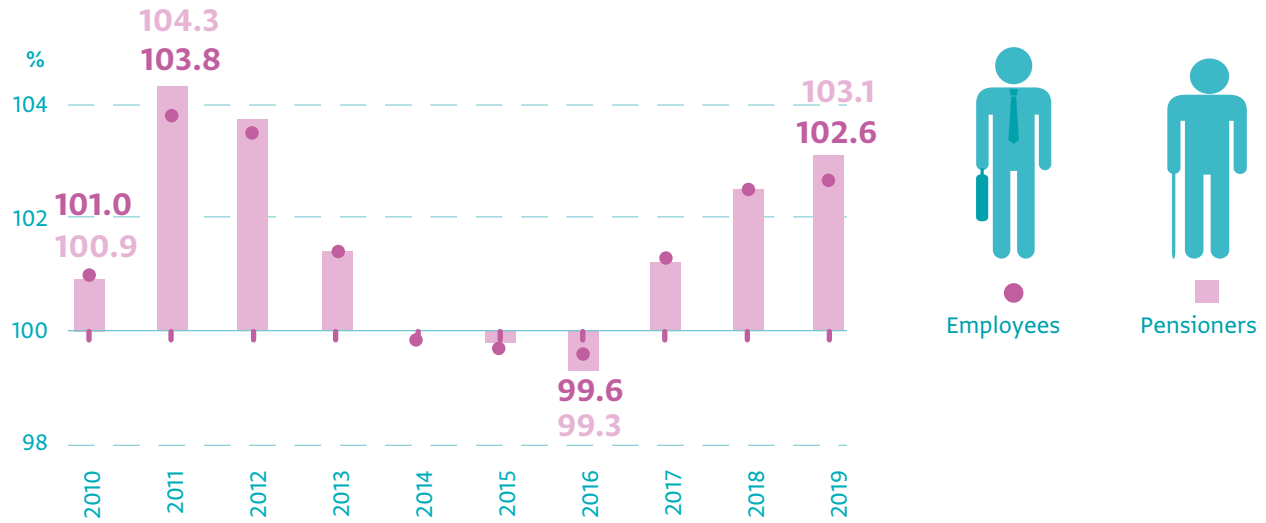


Nominal wages (light purple area)

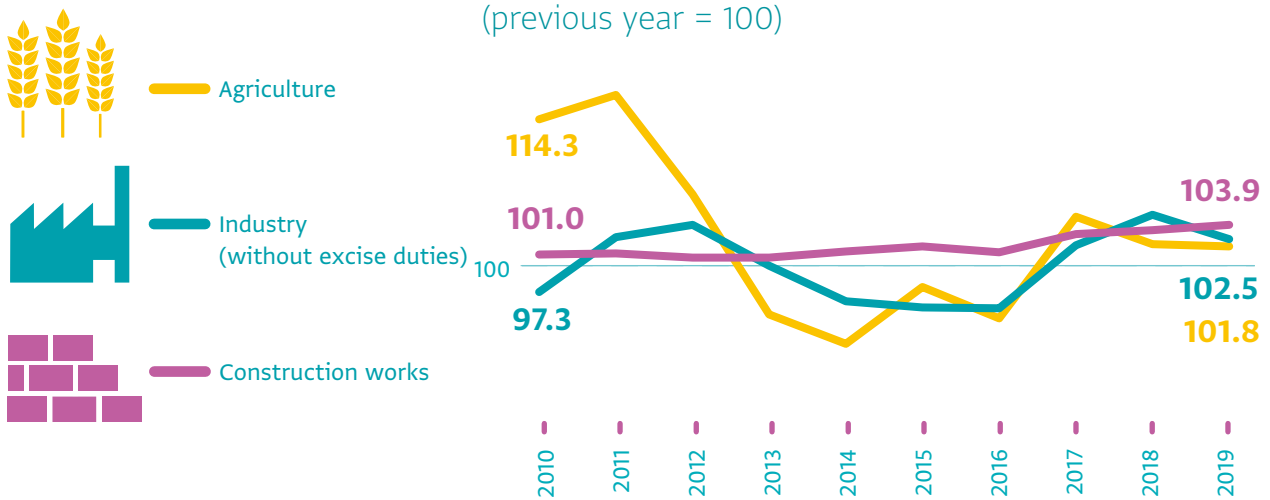
Real wages <sup>5)</sup> (dark purple line)

5) Calculated on index of consumer prices  
DATAcube. [np2006rs], [np2018qs]

### Cost of living indices for households (previous year = 100)



### Production sphere price indices (previous year = 100)



**Imports** <sup>6)</sup>  
year 2010  
**EUR 48.4 billion**  
  
year 2019  
**EUR 79.4 billion**

**Exports** <sup>6)</sup>  
year 2010  
**EUR 49.3 billion**  
  
year 2019  
**EUR 80.5 billion**



**Balance of foreign trade** <sup>6)</sup>  
year 2010      year 2019  
**EUR 0.8 billion**      **EUR 1.1 billion**

<sup>6)</sup> Current prices; FOB - type value;  
2019 - preliminary data  
DATAcube. [zo0001ms]





# 1) DEMOGRAPHY AND SOCIAL STATISTICS

## AVERAGE SLOVAK WOMAN

## AVERAGE SLOVAK MAN

# IN TIME



### WE LIVE... (years)

#### Life expectancy at birth

year 2010 **78.8** year 2019 **80.8**

#### Mean age

year 2010 **40.3** year 2019 **42.6**

### WE STUDY...

#### University students - full-time study <sup>2)</sup>

year 2010 **77 541**  
year 2019 **54 627**

### WE STUDY...

#### University students - full-time study <sup>2)</sup>

year 2010 **58 580**  
year 2019 **39 494**

### WE LIVE... (years)

#### Life expectancy at birth

year 2010 **71.6** year 2019 **74.3**

#### Mean age

year 2010 **37.1** year 2019 **39.5**

### WE WORK...

#### Employment rate

by LFS (20 - 64 years)

year 2010 **57.5 %**

year 2019 **66.9 %**

### WE EARN...

#### Average gross monthly earnings <sup>1)</sup>

year 2010 **709 €**  
year 2019 **1 116 €**

### WE ENJOY...

#### Average monthly old-age solo pensions

year 2010 **315 €**  
year 2019 **411 €**

### WE ENJOY...

#### Average monthly old-age solo pensions

year 2010 **401 €**  
year 2019 **510 €**

### WE WORK...

#### Employment rate

by LFS (20 - 64 years)

year 2010 **71.9 %**

year 2019 **79.9 %**

### WE EARN...

#### Average gross monthly earnings <sup>1)</sup>

year 2010 **941 €**  
year 2019 **1 399 €**

### Deaths on neoplasms (persons)



### Criminal offenders (persons)

year 2010 **7 847**  
year 2019 **6 508**

### Criminal offenders (persons)

year 2010 **45 459**  
year 2019 **33 831**

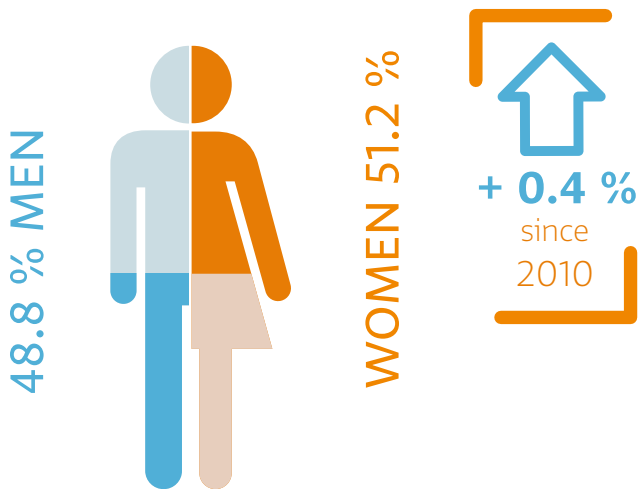
### Deaths on neoplasms (persons)



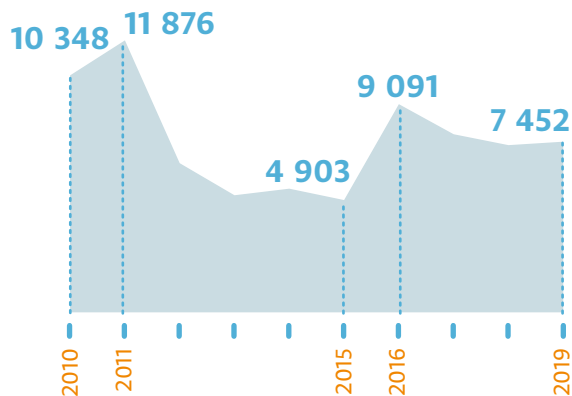
1) Structure of Earnings Survey  
2) Slovak citizenship

# POPULATION

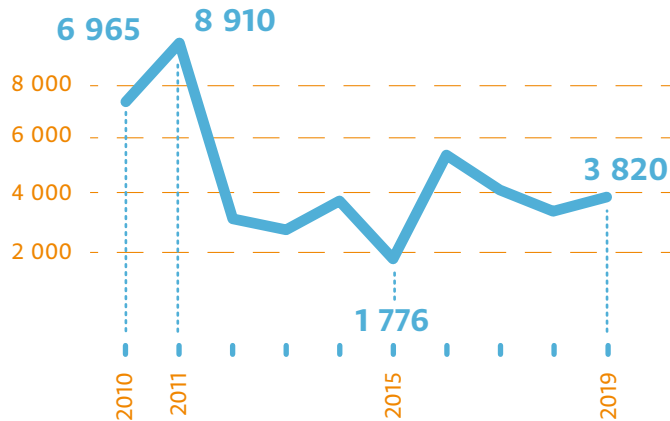
As of Dec. 31, 2019 we were together **5 457 873**



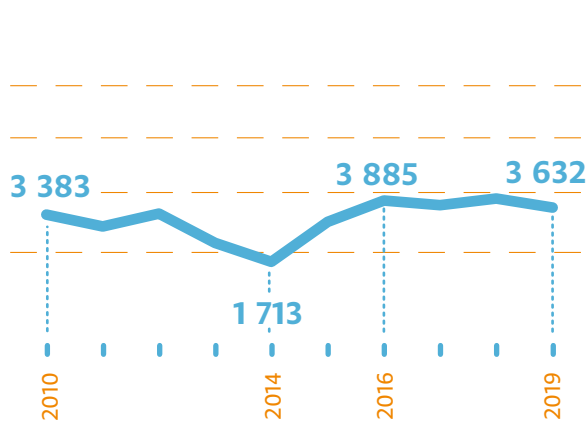
Total increase of population



Natural increase of population

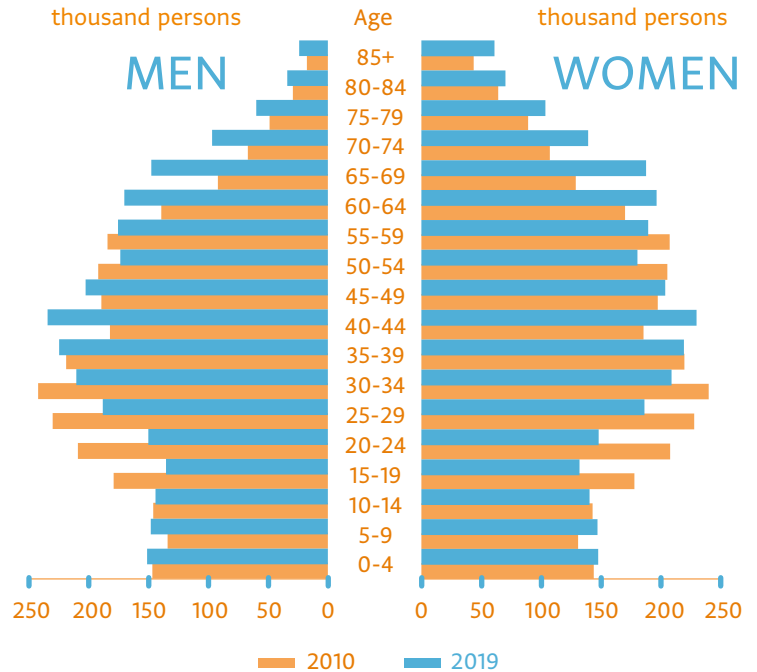
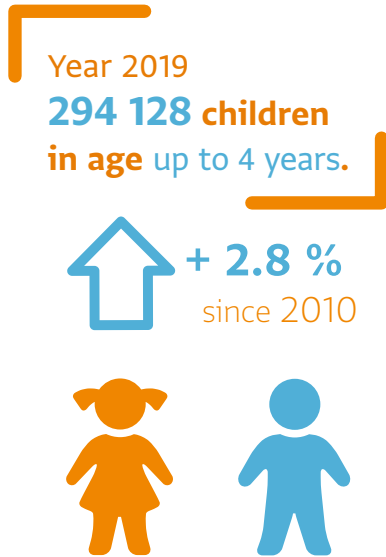


Net migration

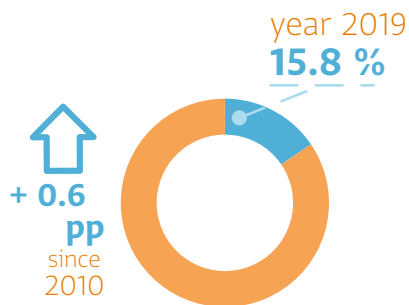




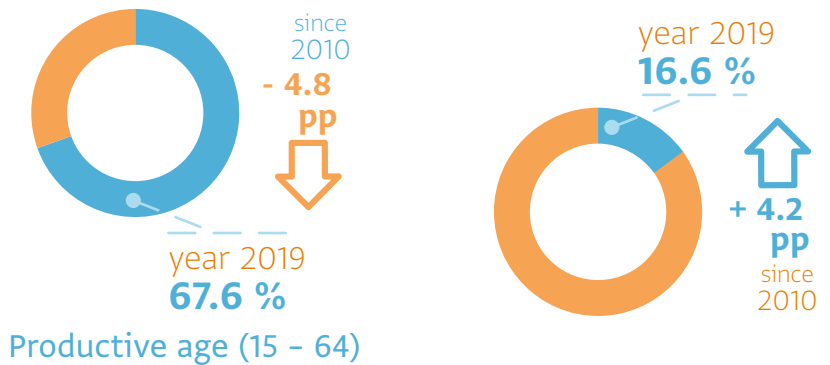
## Age structure of population as of Dec. 31



### Pre-productive age (0 - 14)

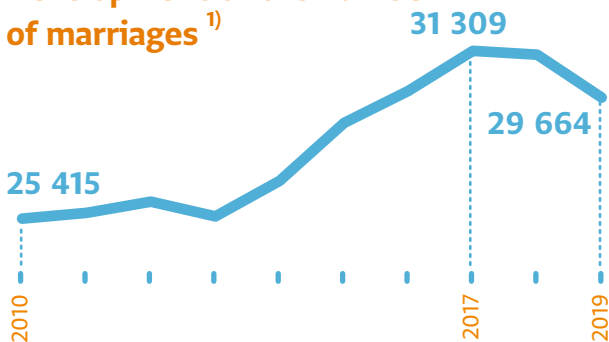


### Post-productive age (65 and more)

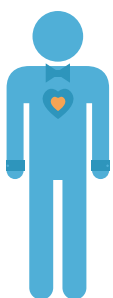


## NUPTIALITY

Development of the number of marriages <sup>1)</sup>



Mean age at 1st marriage engaged couple (years)



year 2010  
29.9  
year 2019  
31.9



year 2010  
27.3  
year 2019  
29.4

Year 2019

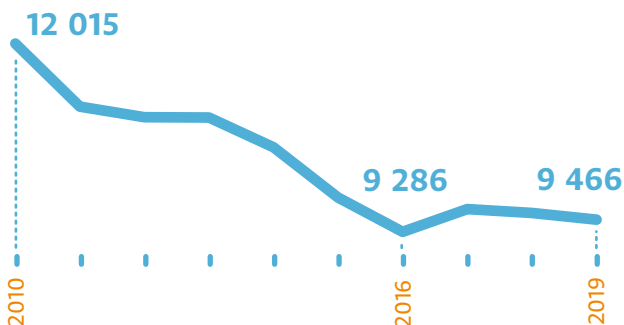
**September** was the most favorite month for engaged couples

couples **15.7 %** of marriages.



## DIVORCE

Development of the number of divorces <sup>2)</sup>



Mean age at divorce (years)



year 2010  
41.4  
year 2019  
43.8



year 2010  
38.4  
year 2019  
40.9

Year 2019

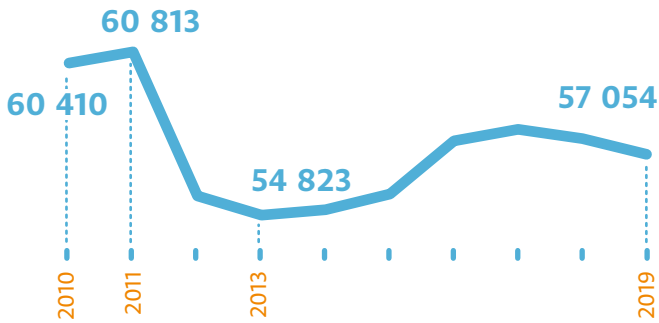
**divorced couples** lived together in average **15.1** years.

1) By permanent residence of a groom

2) By last permanent residence of spouse

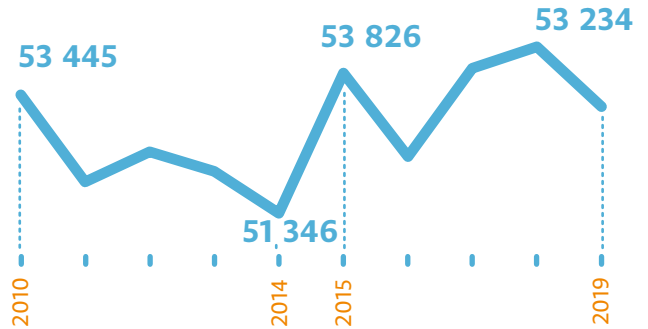
## NATALITY

Development of the number of live births



## MORTALITY

Development of the number of deaths



Mean age of woman at childbirth by birth order (years)



year 2010  
**27.3**  
year 2019  
**28.1**

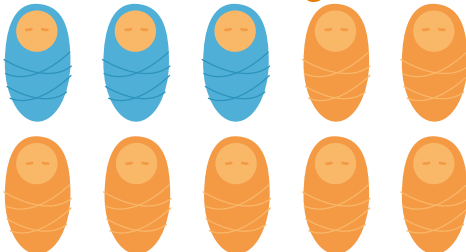


year 2010  
**29.7**  
year 2019  
**30.8**

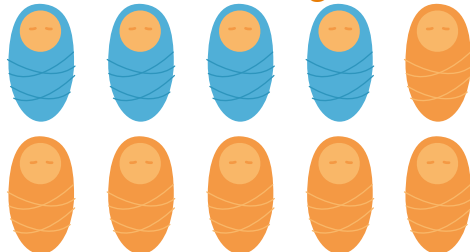


year 2010  
**30.9**  
year 2019  
**31.6**

year 2010  
**3 out of 10 live births were born outside marriage**

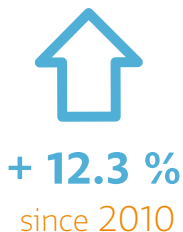


year 2019  
**4 out of 10 live births were born outside marriage**



## MIGRATION

### Internal migration

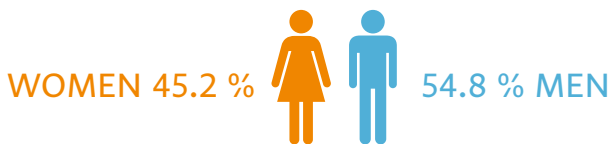
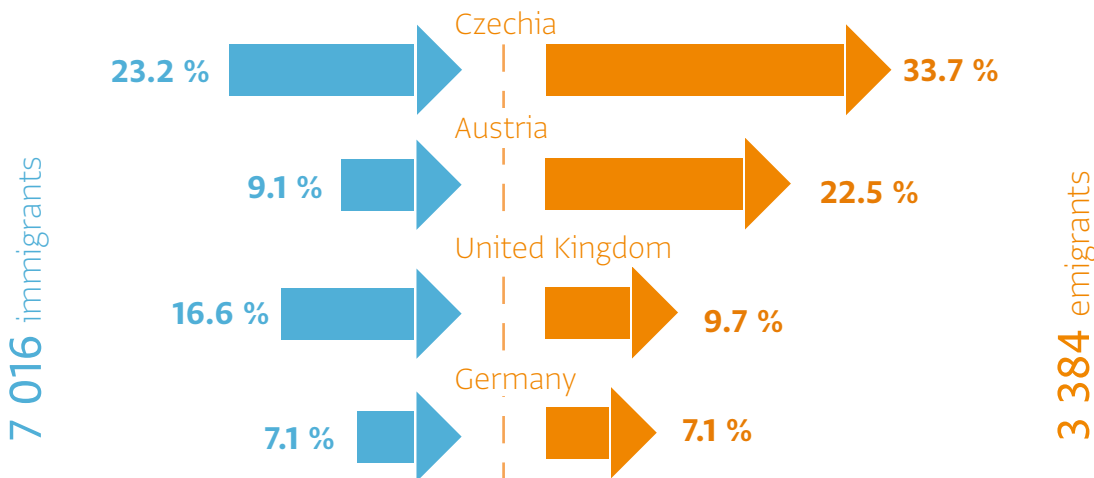


46.7 % MEN



WOMEN 53.3 %

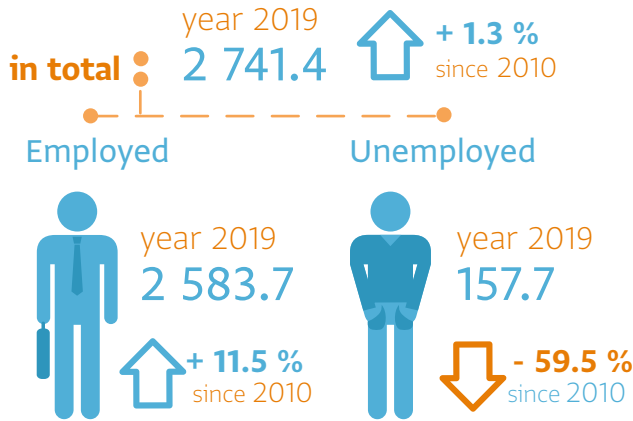
### International migration



# BALANCE OF ECONOMIC ACTIVITY OF POPULATION <sup>1)</sup>

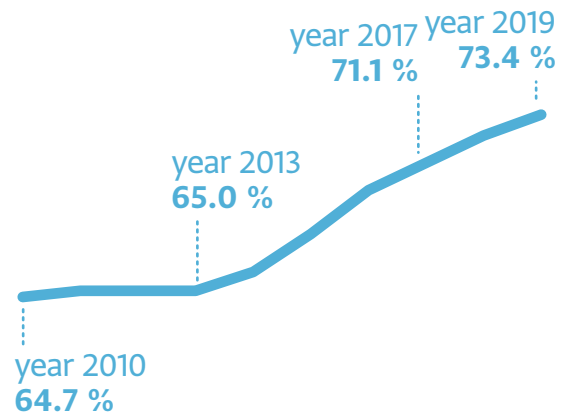
## Economically active population

(thousand persons)

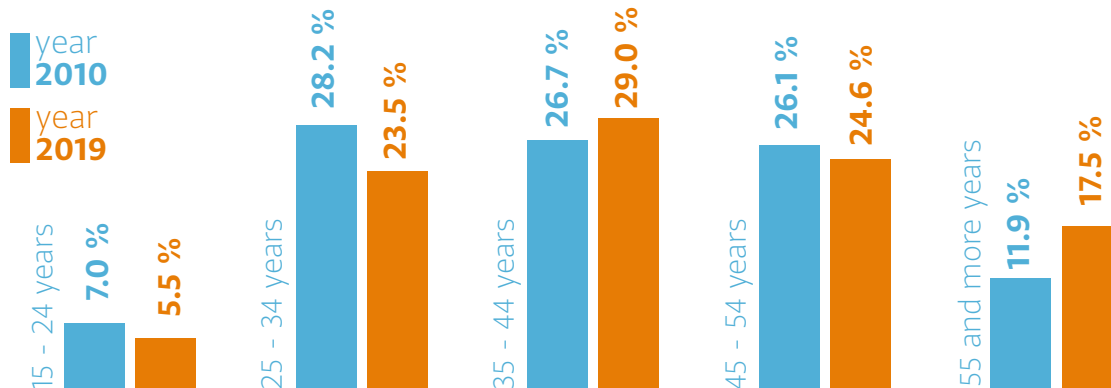


## Development of employment rate

(20 - 64 years)



## Age structure of employed



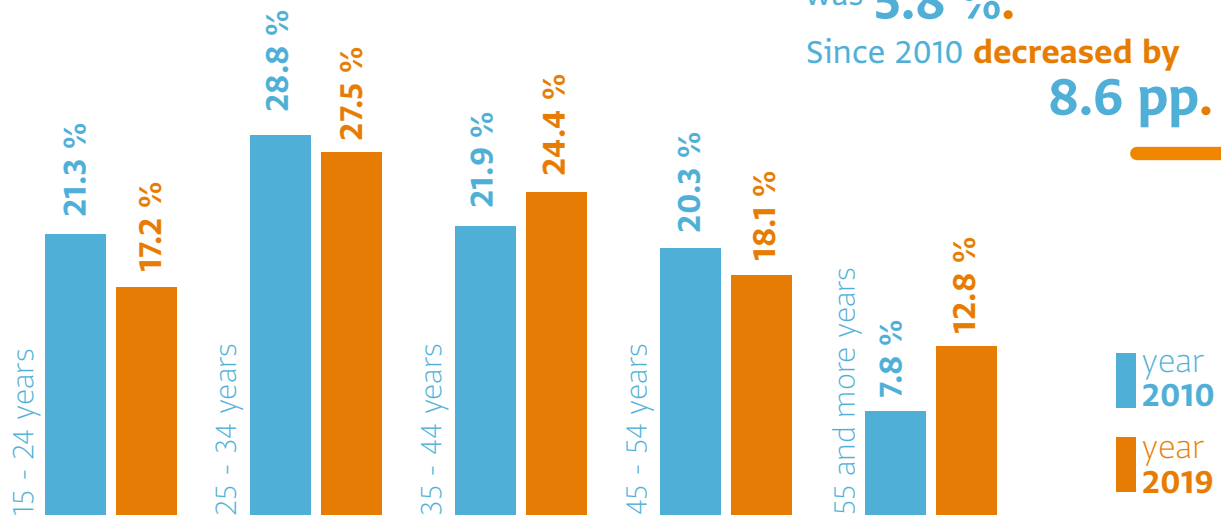
1) Labour Force Sample Survey  
DATAcube. [pr2006rs], [pr2042rs]

## Economically inactive population aged 15 years and more

(thousand persons)

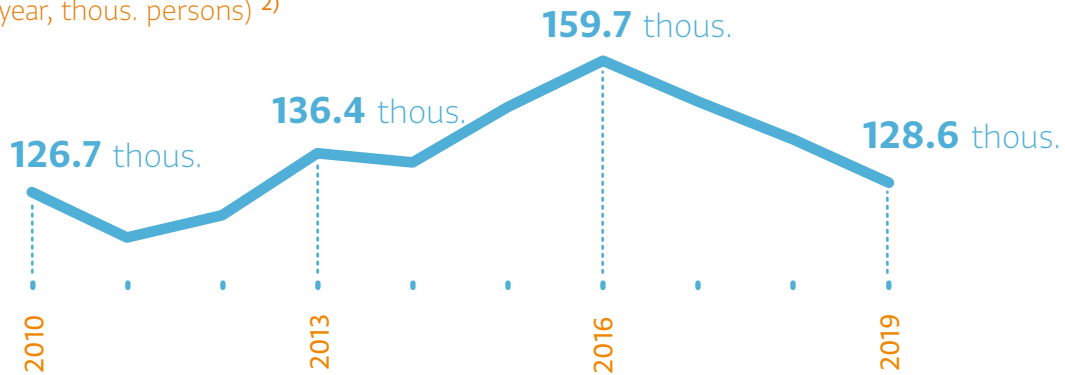


## Age structure of unemployed



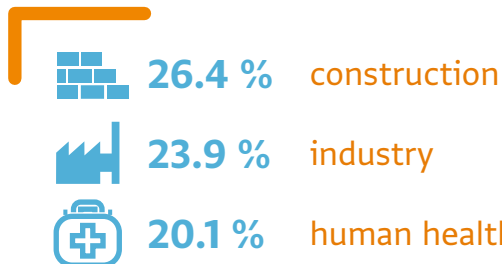
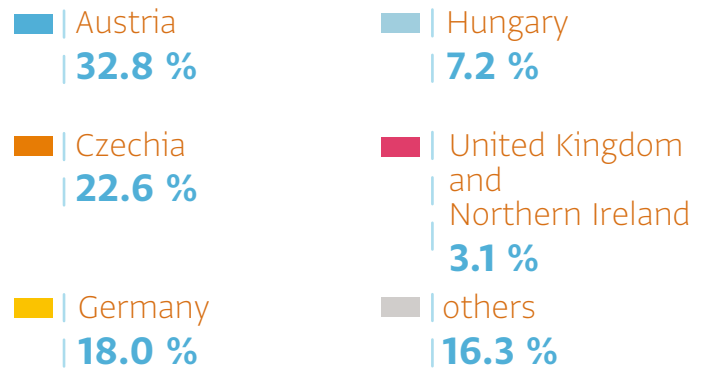
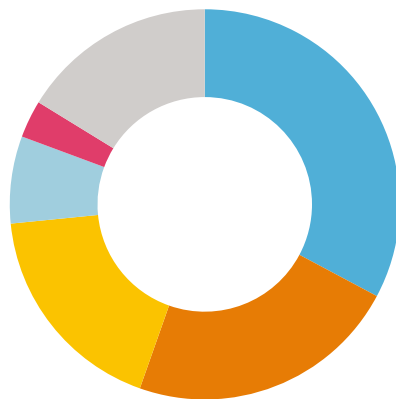
## Development of the number of employed abroad

(up to 1 year, thous. persons) <sup>2)</sup>



## Where did we work abroad?

year 2019

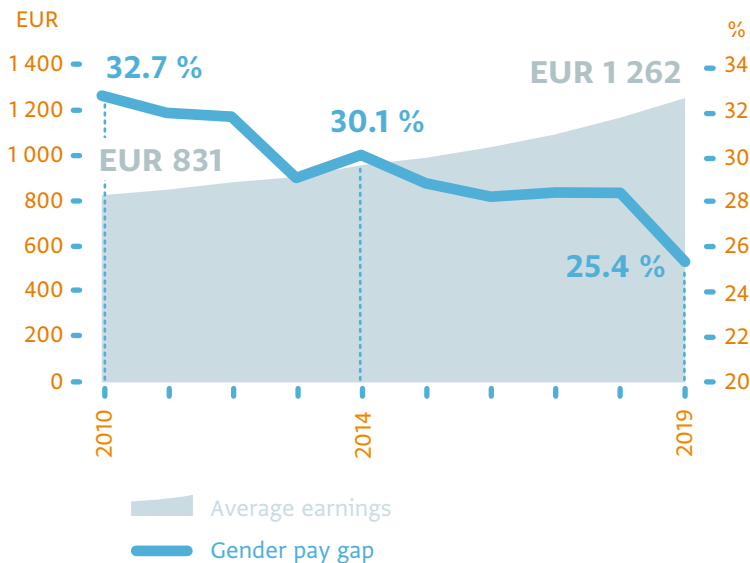


<sup>2)</sup> Including time unlimited commuting  
DATAcube. [pr3105qr]

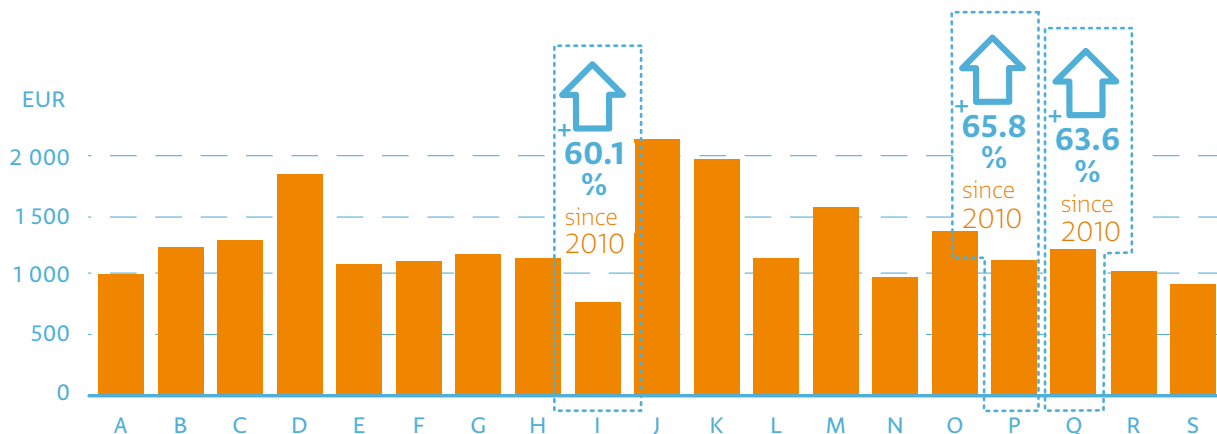
# EARNINGS <sup>1)</sup>



## Development of average gross monthly earnings of employee



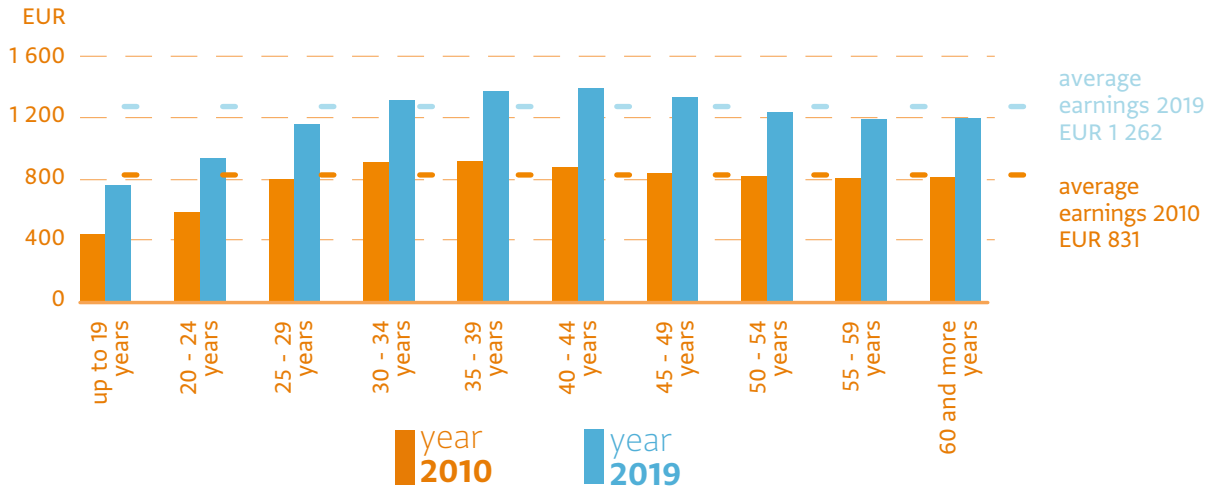
## Average gross monthly earnings by economic activities SK NACE Rev. 2



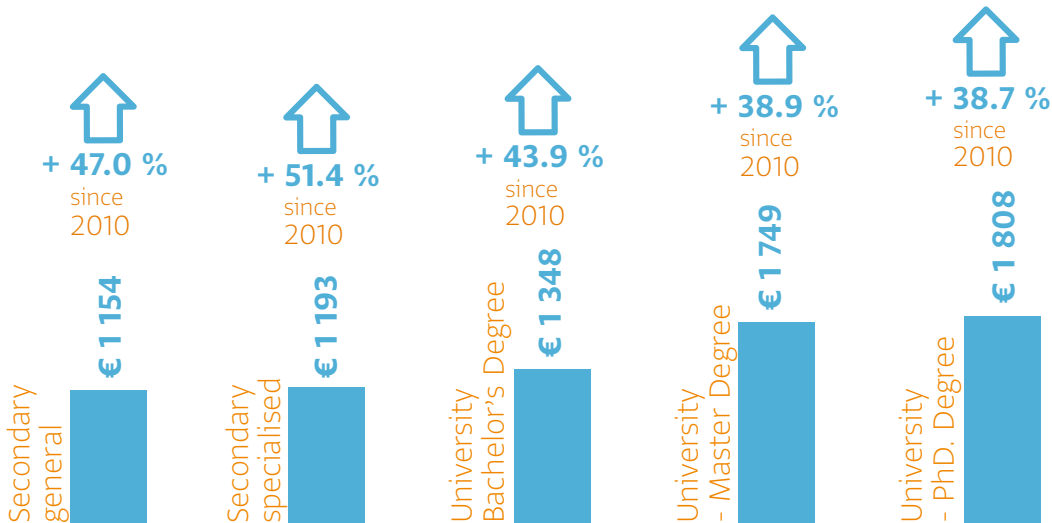
1) Structure of Earnings Survey  
DATAcube. [np2002rs]



### Average gross monthly earnings by age groups



### Average gross monthly earnings by selected levels of education



# INCOME AND EXPENDITURE OF HOUSEHOLDS <sup>1) 2)</sup>

year 2019

Net money income in total yearly  
per capita of private household (EUR)

● 5 950 €

↑ + 27.1 %  
since 2010

of which in %  
net income from employment  
(in all sectors) ● 55.5 %

↑ + 2.2 pp  
since 2010

income from business <sup>3)</sup> ● 10.4 %

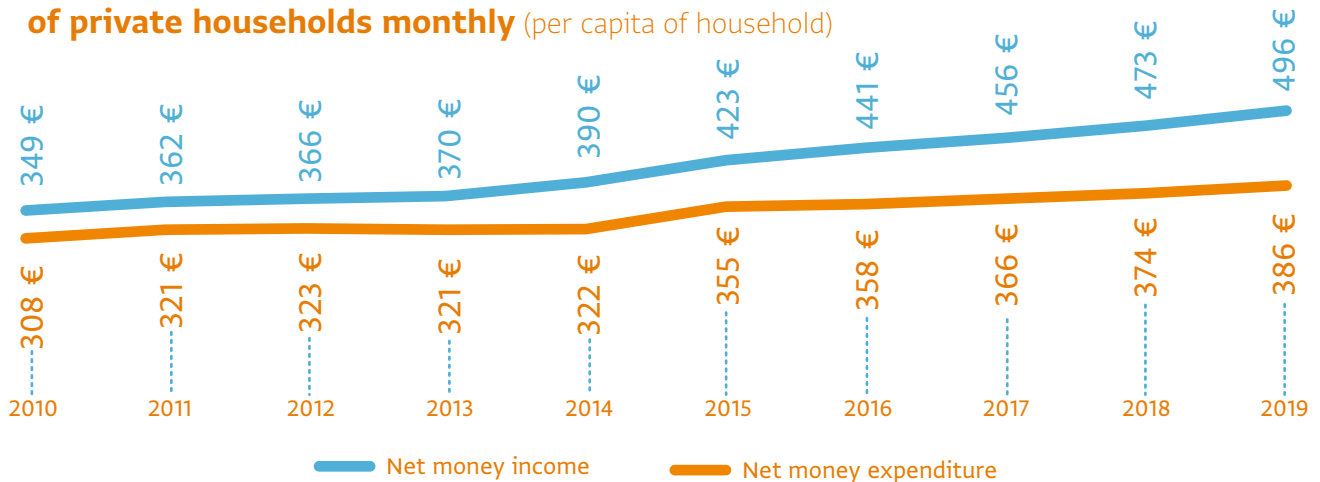
↓ - 0.7 pp  
since 2010

social income ● 4.1 %

↓ - 0.4 pp  
since 2010



## Development of net money income and expenditure of private households monthly (per capita of household)



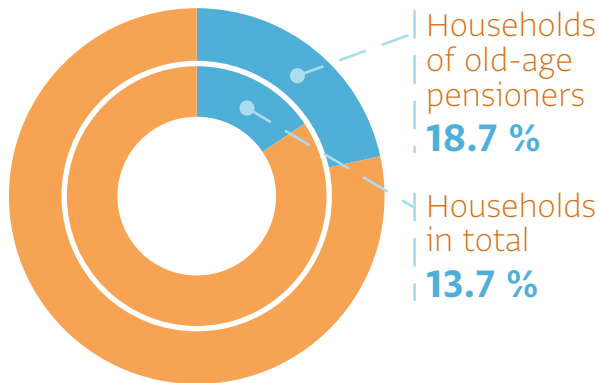
1) Household Budget Survey

2) 2019 data were simulated

3) An amount by which a self-employer contributes to household budget

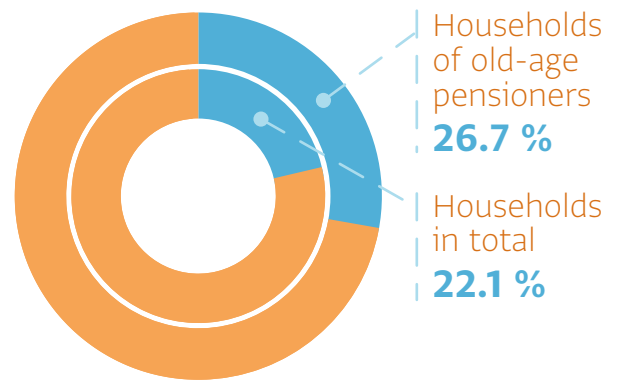
## Yearly net money expenditure of private households

### on power

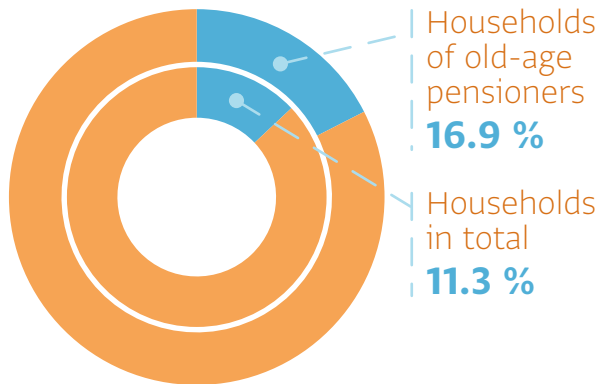


2010

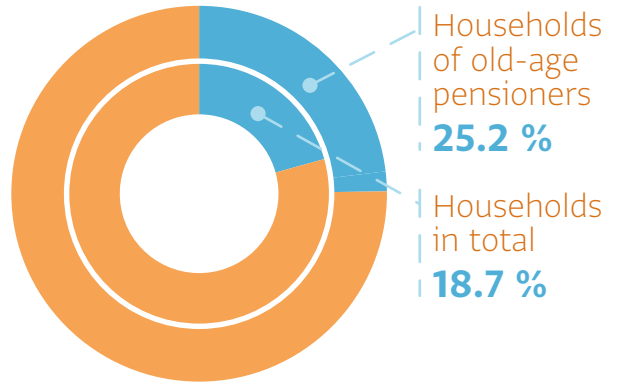
### on food



2010



2019



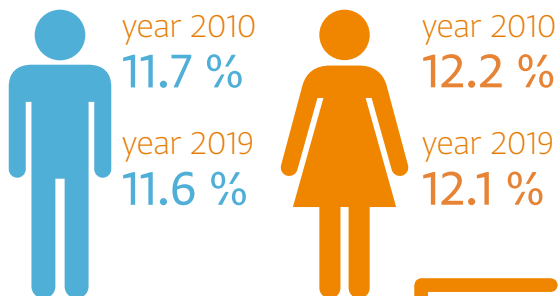
2019

In 2019, net money expenditure in total per capita of household were **EUR 4 629.**

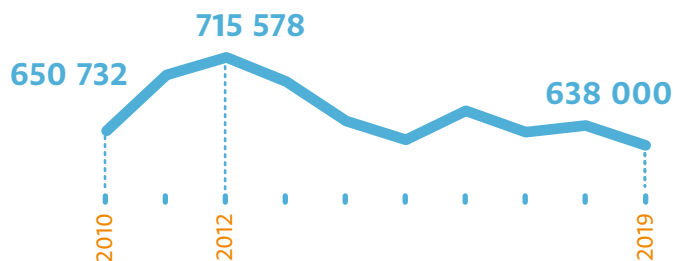


# LIVING CONDITIONS OF POPULATION <sup>1)</sup>

## At-risk-of-poverty rate

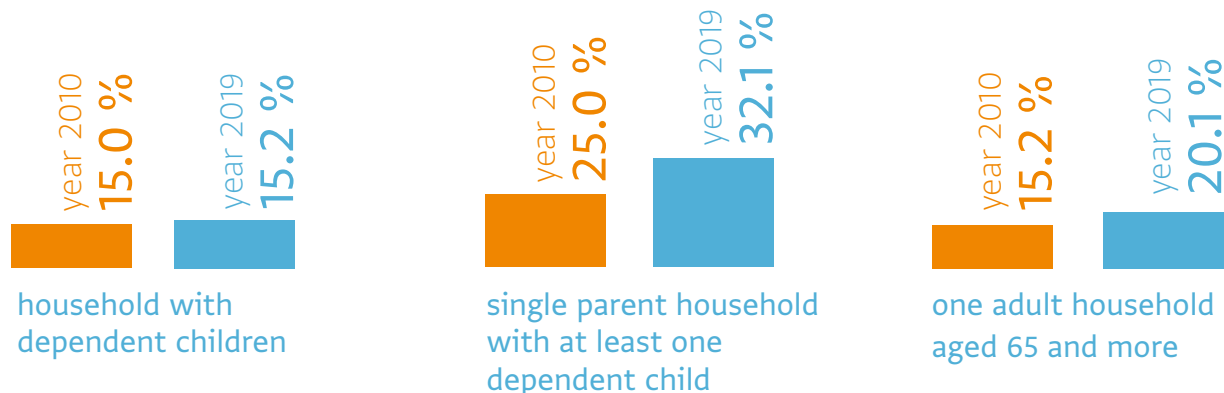


## Development of the number of persons below the at-risk-of-poverty threshold (60 % median)



Since 2010, at-risk-of-poverty rate of the total population **decreased by 0.1 pp to 11.9 % in 2019**. In 2019, population aged up to 17 years was the most vulnerable with the at-risk-of-poverty rate at **19 %**.

## At-risk-of-poverty rate by household type



<sup>1)</sup> Sample survey on Income and Living Conditions of Households (EU SILC) DATAcube. [ps2032rs], [ps2034rs], [ps3003rr]

## At-risk-of-poverty rate of persons by the most frequent activity status

at work



year 2010  
5.7 %

year 2019  
4.4 %

unemployed



year 2010  
41.1 %

year 2019  
56.7 %

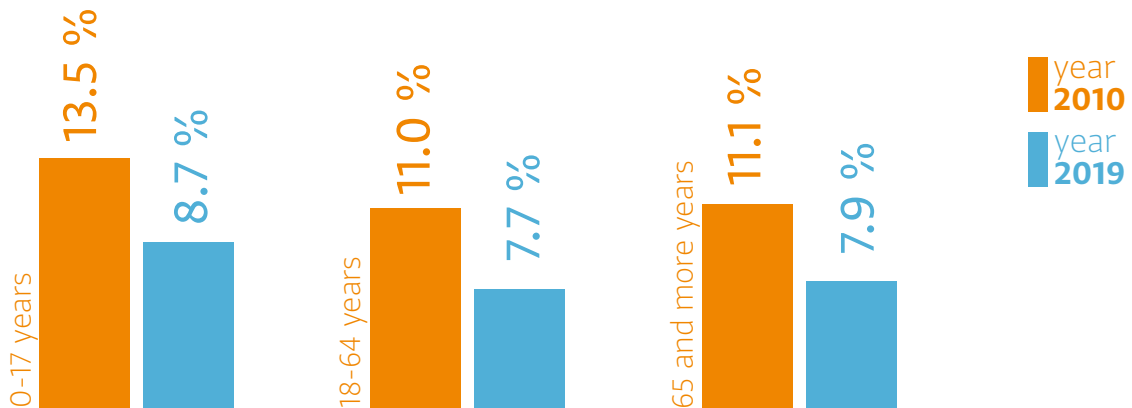
retired



year 2010  
6.7 %

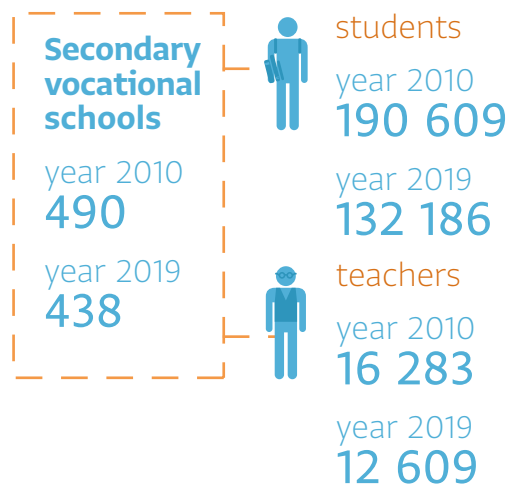
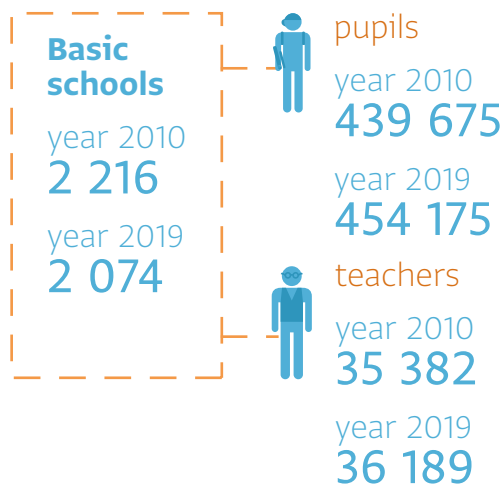
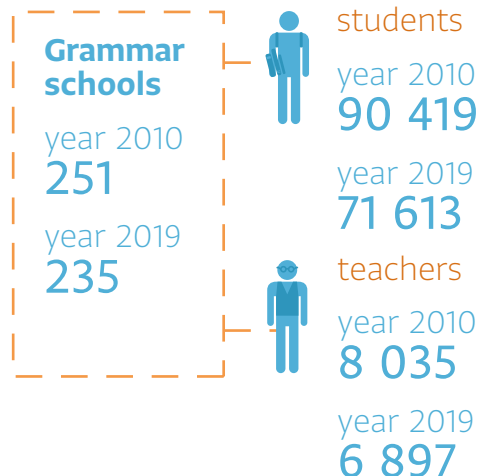
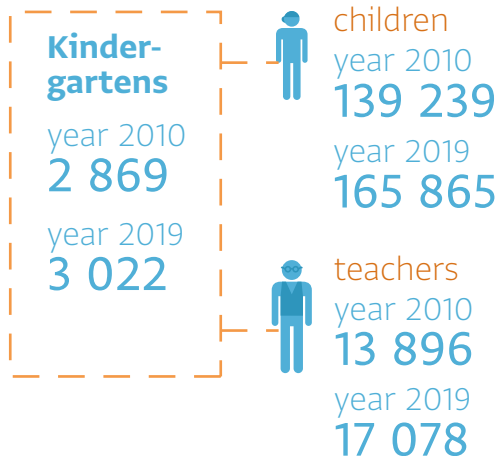
year 2019  
8.6 %

## Severe material deprivation rate <sup>2)</sup>



<sup>2)</sup> The percentage of population with an enforced lack of at least four out of nine material deprivation items  
DATAcube. [ps2029rs], [ps2031rs]

# EDUCATION



## Graduates of universities and colleges (persons)

**Conservatories**  
 year 2010  
**14**  
 year 2019  
**17**



students  
 year 2010  
**2 329**  
 year 2019  
**3 079**



teachers  
 year 2010  
**860**  
 year 2019  
**1 066**

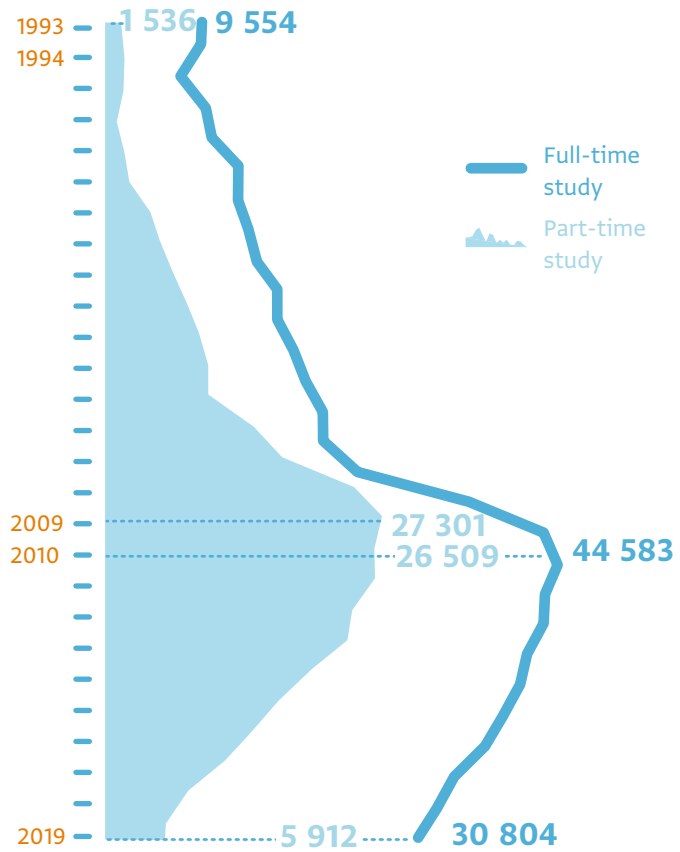
**Universities and colleges <sup>1)</sup>**  
 year 2010  
**33**  
 year 2019  
**33**



students  
 year 2010  
**139 716**  
 year 2019  
**105 393**



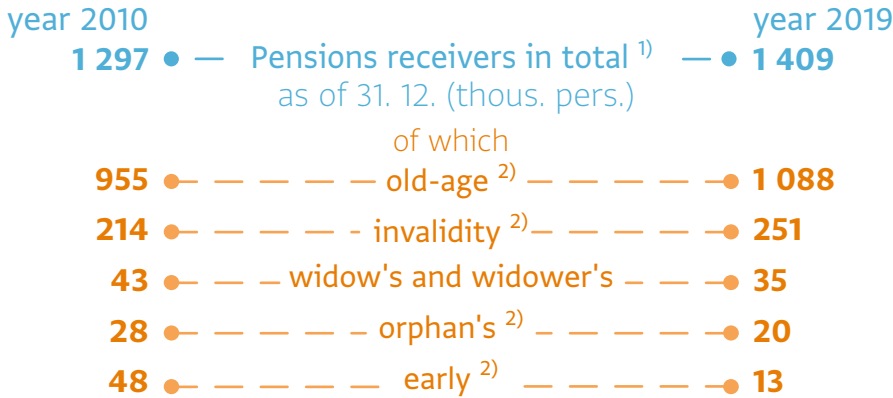
teaching staff  
 year 2010  
**10 970**  
 year 2019  
**9 897**



Year 2019  
**22 956 part-time students**  
 since 2010  
**- 64.8 %**

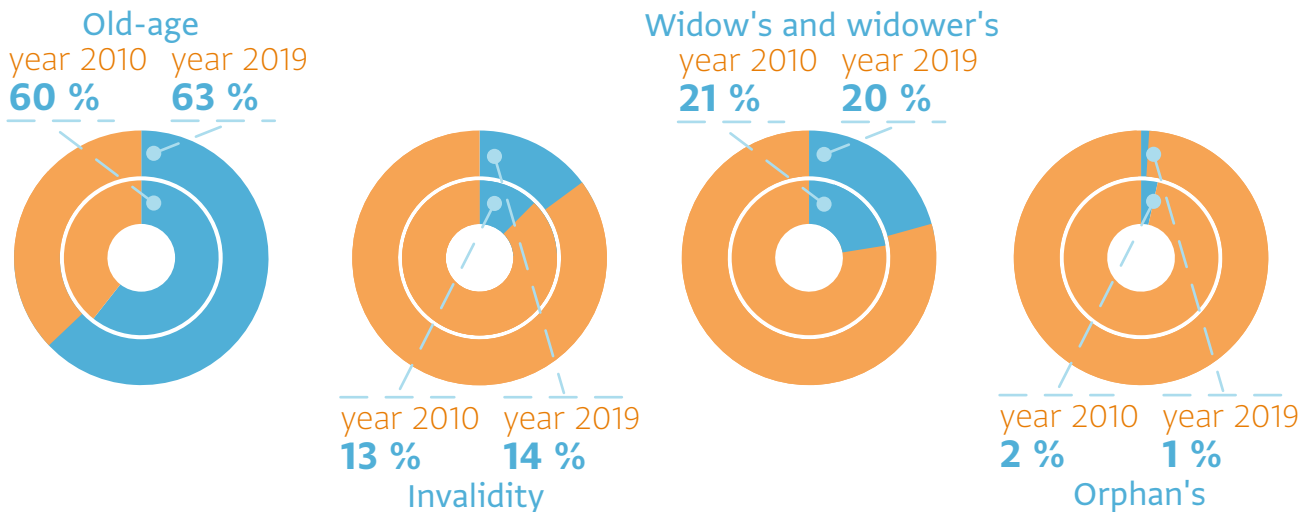
1) Full-time study

# SOCIAL PROTECTION



**While in 2010 expenditures on pension benefits were EUR 5 350 million, in 2019 the amount increased to EUR 7 602 million.**

## Structure of pensions paid <sup>2)</sup>



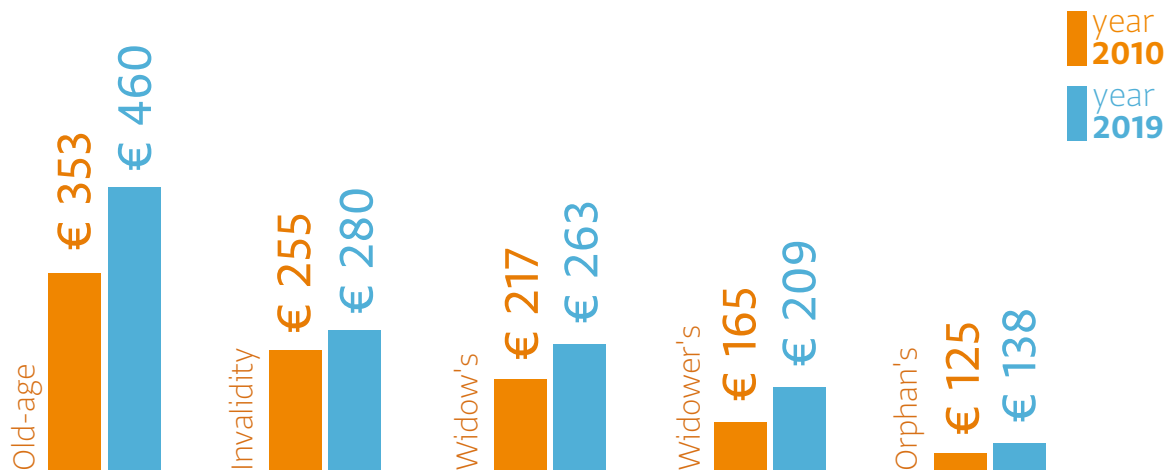
1) Pensions receiver is included in the total number only once regardless of the number of pensions received

2) Including pensions overlapping  
DATAcube. [so2003rs], [so3002rr]



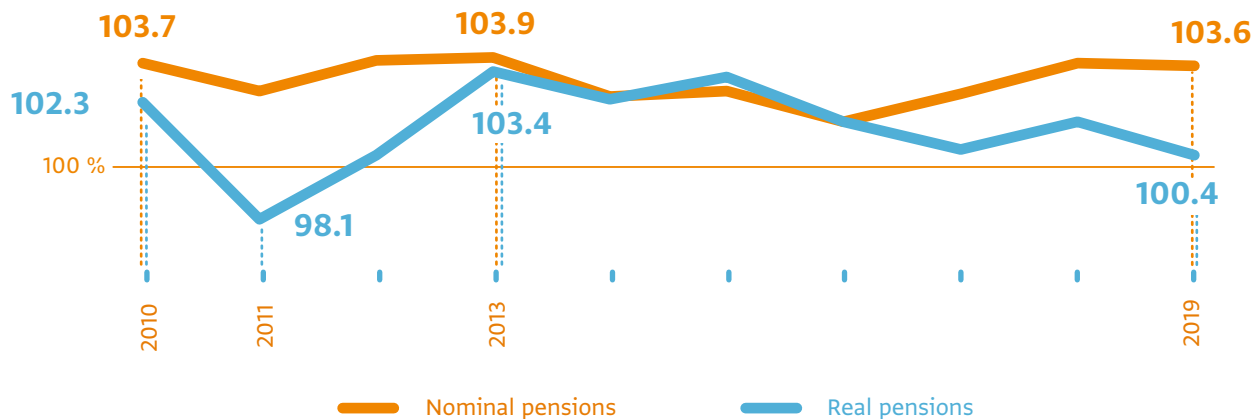
## Average monthly level of pensions paid - solo

as of Dec. 31



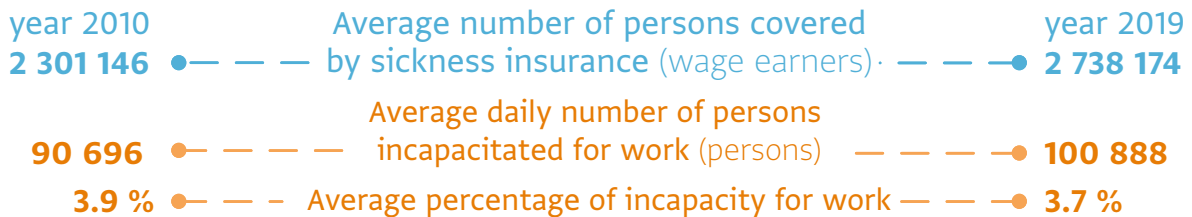
## Development of old-age pensions solo - indices

(previous year = 100) <sup>3)</sup>

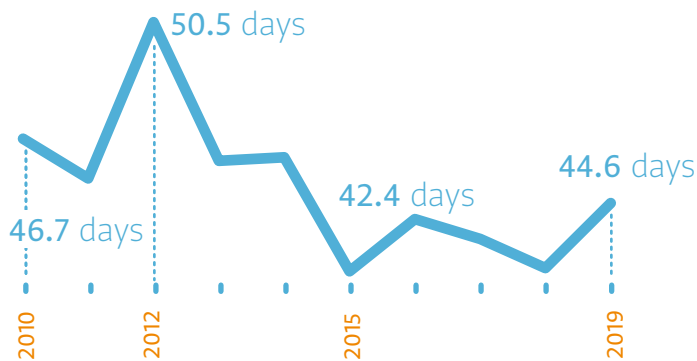


<sup>3)</sup> Calculated on index of consumer prices  
 DATAcube. [so2003rs]

# HEALTH



## Development of average duration of incapacity for work



Year 2019 consumption of drugs reached the volume of **EUR 1 903.2 million** since 2010 went up by **71 %**.

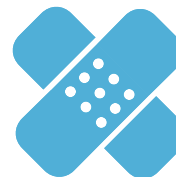
## Average duration of incapacity for work

due to disease



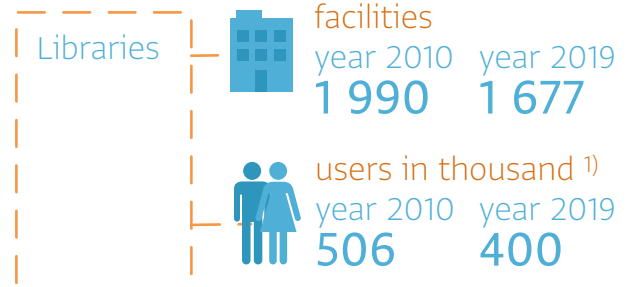
year 2010  
**46.7 days**  
year 2019  
**44.6 days**

due to work injury



year 2010  
**53.9 days**  
year 2019  
**64.2 days**

# CULTURE



**61 %** In 2019 drama was the most visited type of theatre performance.

<sup>1)</sup> Registered active users

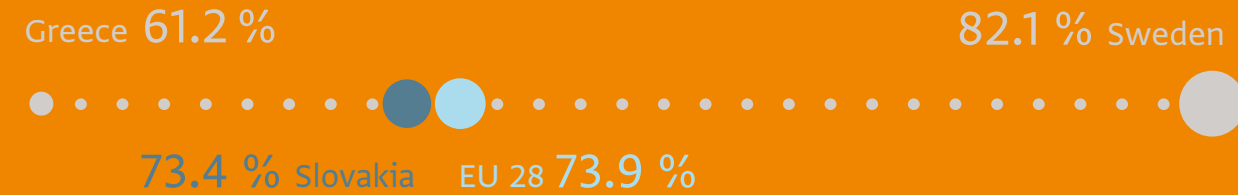
# A QUICK GLANCE AT THE EU

Seniors (65 and more years, in %), Jan. 1, 2019



Eurostat [demo\_pjanbroad]

Employment rate by LFS (20 - 64 years, in %), 2019



Eurostat [lsfi\_emp\_a]

Population with tertiary education

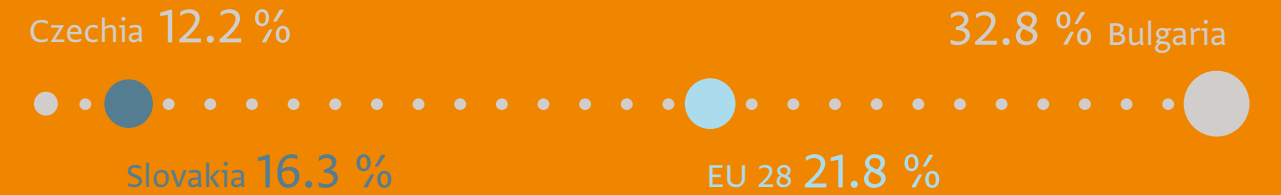
(15 - 64 years, in %), 2019



Eurostat [edat\_lfs\_9918]

Population at risk of poverty or social exclusion by LFS

(15 - 64 years, in %), 2019



Eurostat [ilc\_peps01]



100 EURO

100 EURO

100

EURO



## 2) MACROECONOMIC STATISTICS

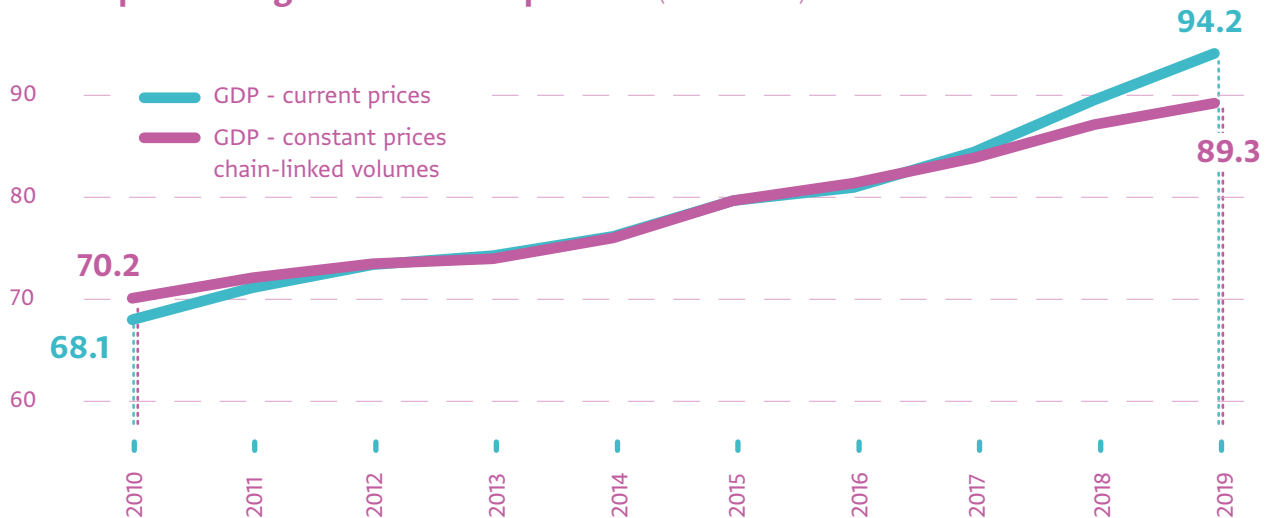
# GROSS DOMESTIC PRODUCT <sup>1) 2) 3)</sup>

	2010	2019
<b>Gross domestic product at current prices (EUR million)</b>		
Output	148 981	218 164
Index (previous year = 100)	108.6	101.2
Intermediate consumption	87 322	133 874
Index (previous year = 100)	110.7	100.6
Value added	61 659	84 289
Index (previous year = 100)	105.8	102.2
Net taxes on products	6 434	9 882
Index (previous year = 100)	104.9	104.4

↑ intermediate consumption  
**+ 53.3 %**  
since 2010

↑ value added  
**+ 36.7 %**  
since 2010

## Development of gross domestic product (EUR billion)



1) ESA 2010 methodology

2) 2017, 2018 data are half-finalized; 2019 data are estimated (sum of quarters)

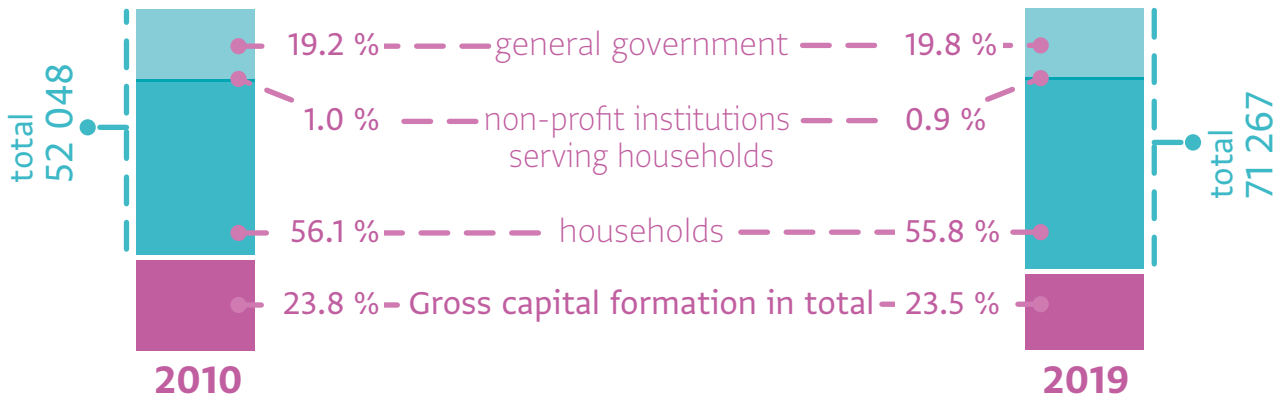
3) Absolute data at curr. prices; indices at con. p. chain-linked volumes with reference year 2015 (previous year = 100)

### Domestic demand (at curr. p.)

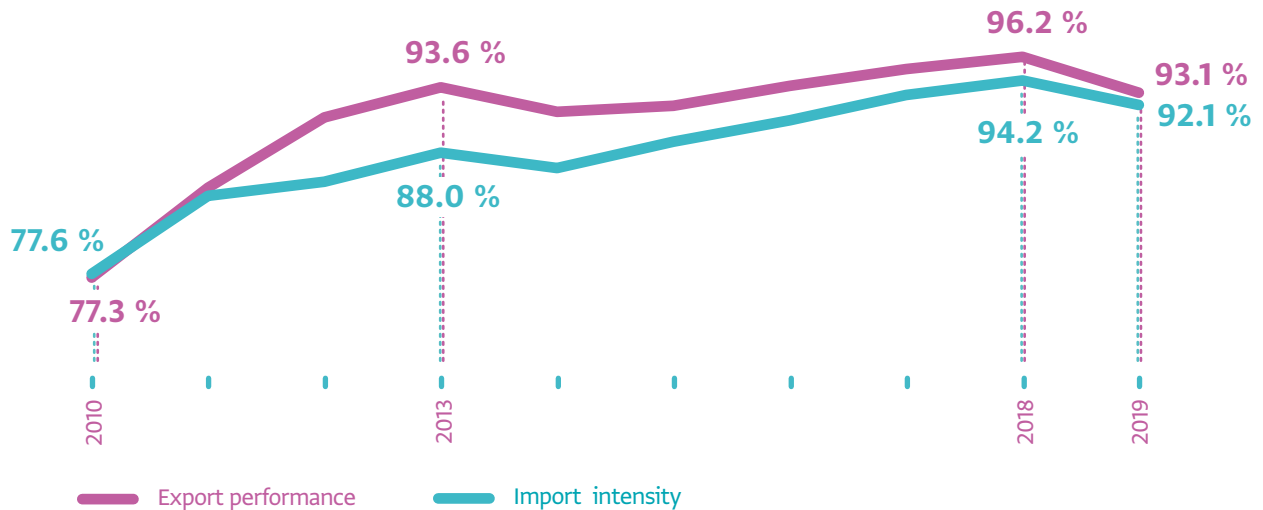
EUR 68 304 million

EUR 93 196 million

#### Final consumption in total:



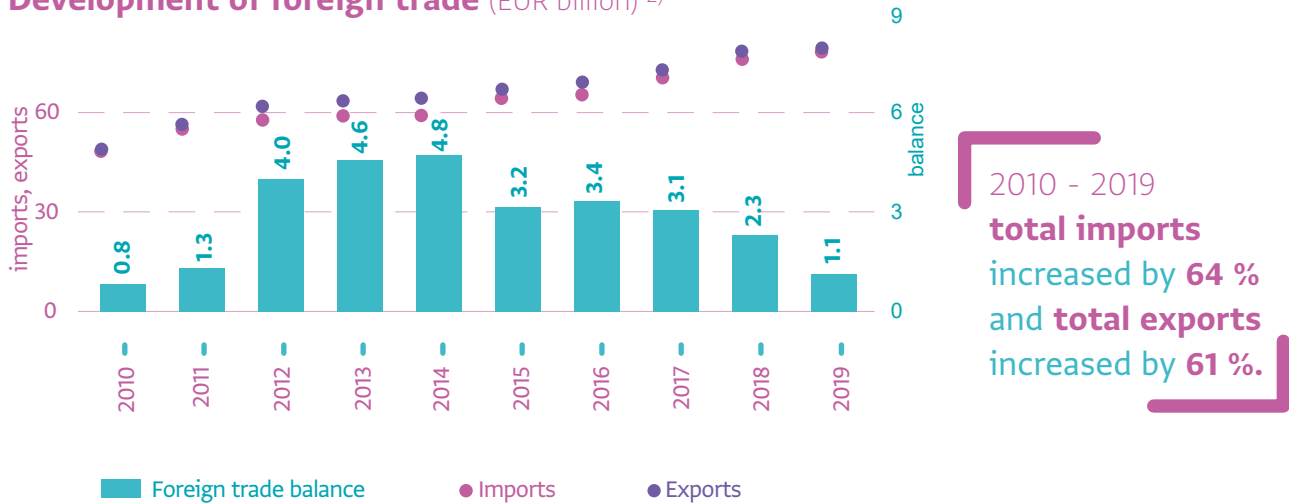
### Development of share of exports and imports on GDP



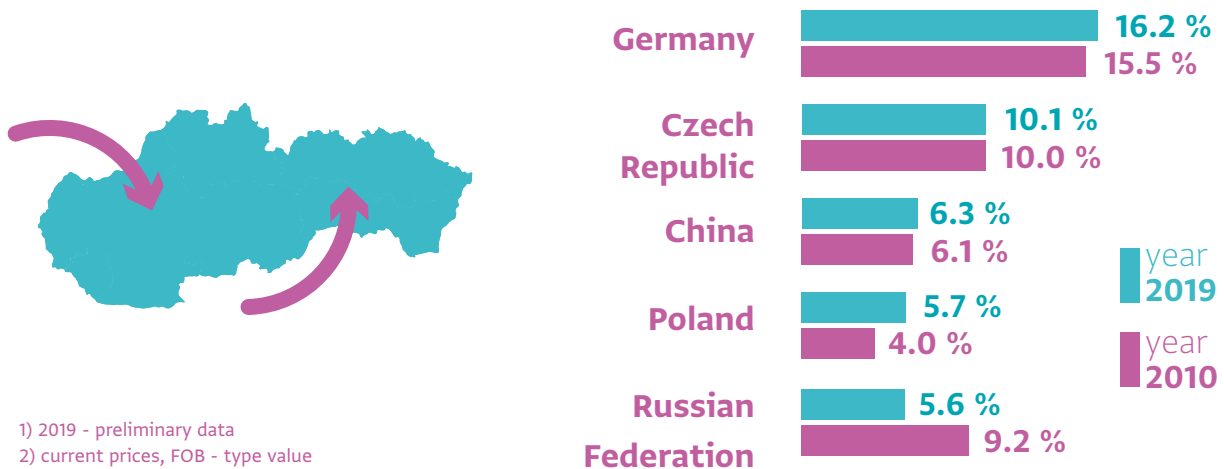


# FOREIGN TRADE <sup>1)</sup>

Development of foreign trade (EUR billion) <sup>2)</sup>



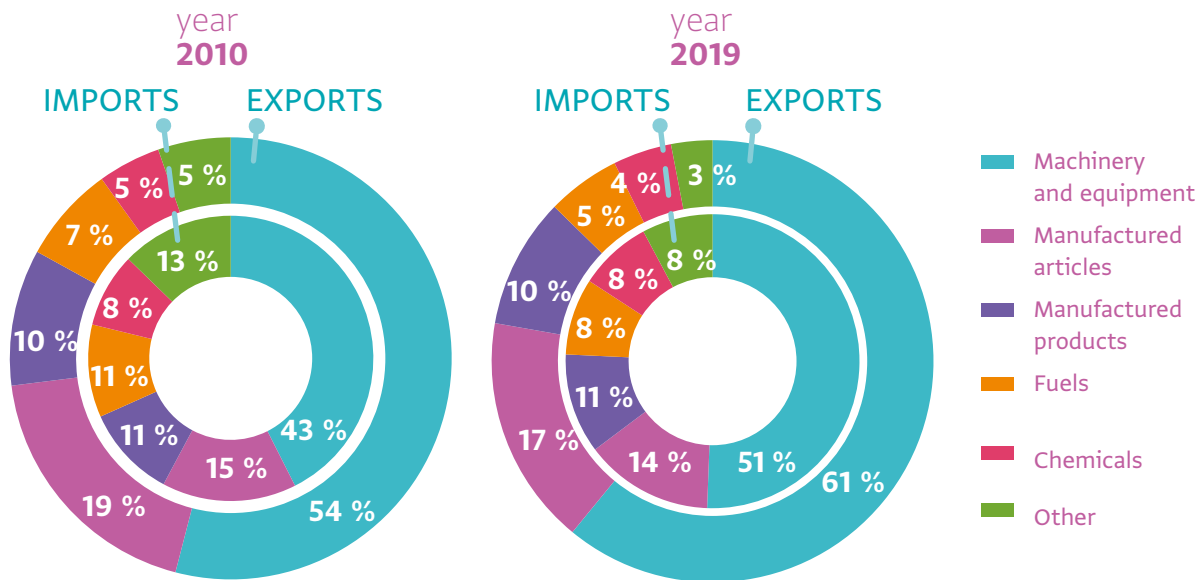
Proportion of selected countries on total imports



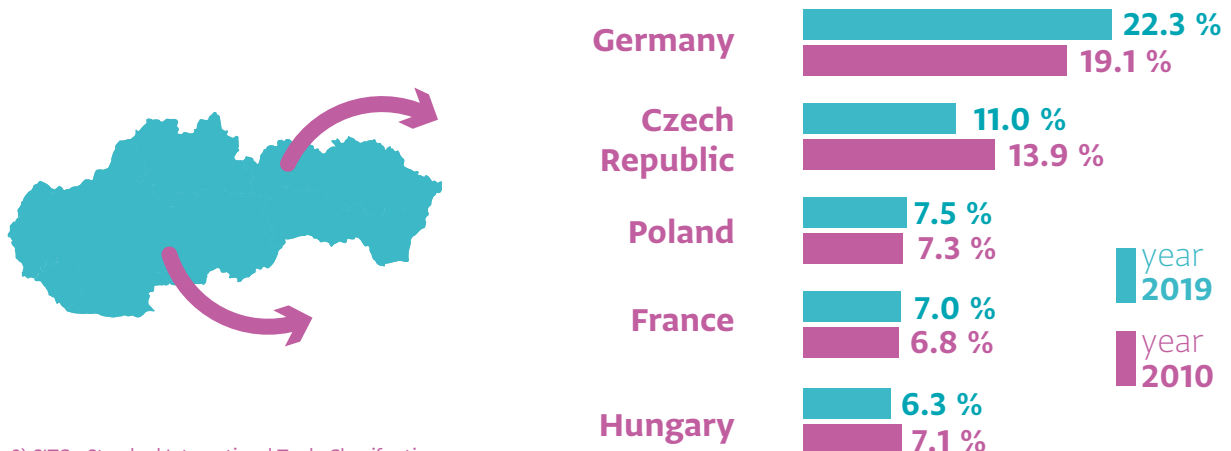
1) 2019 - preliminary data

2) current prices, FOB - type value

### Structure of imports and exports by sections of nomenclature SITC <sup>3)</sup>



### Proportion of selected countries on total exports

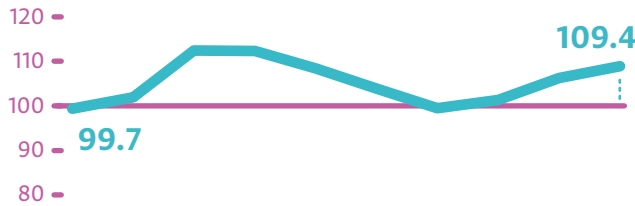


<sup>3)</sup> SITC - Standard International Trade Classification  
 DATAcube. [zo2006rs], [zo2008rs]

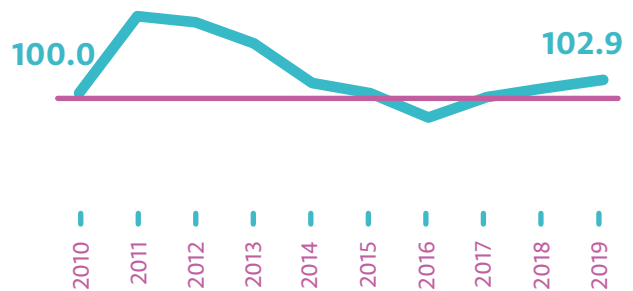
# PRICES

Price indices of production statistics (average 2015 = 100)

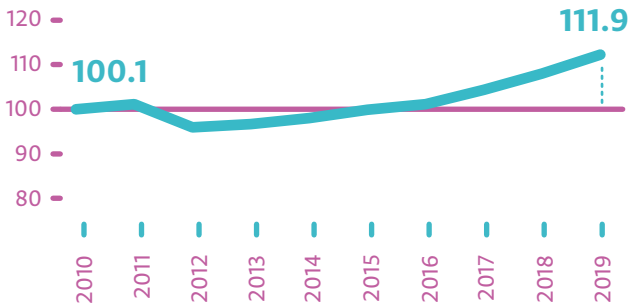
industrial producers - domestic



agricultural products



construction works



Cost of living index increased in total from **150.3** in 2010 to **173.4** in 2019.

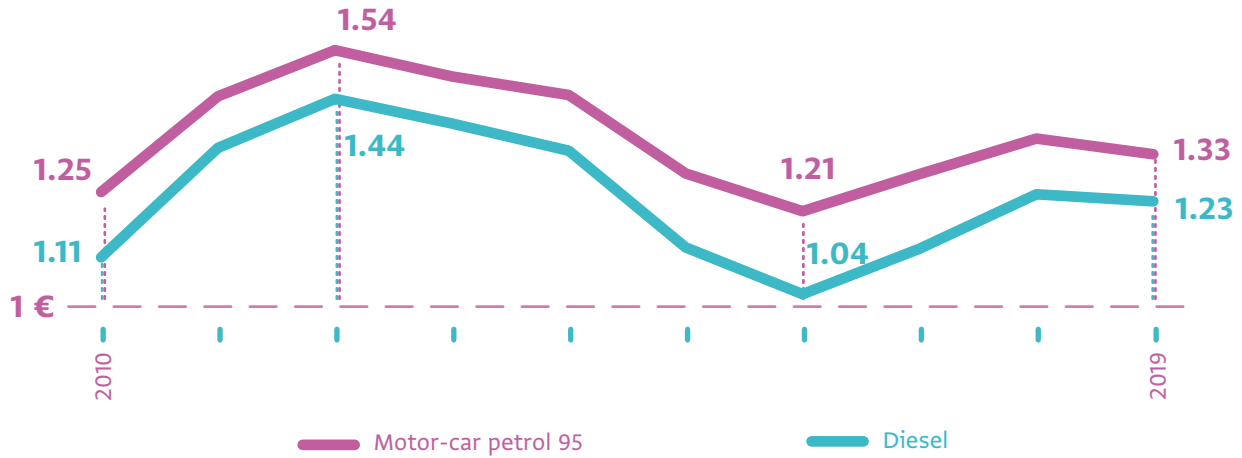
2010		2019		2010		2019	
<b>pensioners</b>		<b>Cost of living indices by COICOP classification (%) <sup>1) 2)</sup></b> <b>In total</b> of which Food and non-alcoholic beverages Housing, water, electricity, gas and other fuels Health <sup>1) 2)</sup>		<b>low-income households</b>			
158.4	184.3			157.6	182.5		
124.9	155.0			127.5	157.3		
230.6	256.8			224.7	247.4		
202.4	246.0			182.1	223.5		

1) COICOP = Classification of Individual Consumption by Purpose Use

2) December 2000 = 100

DATAcube. [sp0102ms], [sp2037rs]

### Price development of fuels (per litre)



### Average consumer prices of selected products



bread  
(kg)

year 2019  
€ 1.44

↑ + 15.2 %  
since 2010



chicken frier  
(kg)

year 2019  
€ 2.41

↑ + 8.1 %  
since 2010



fresh eggs  
(10 pieces)

year 2019  
€ 1.43

↑ + 19.2 %  
since 2010

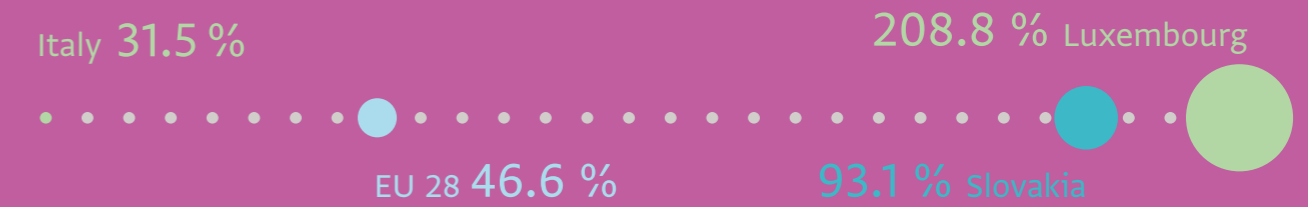
# A QUICK GLANCE AT THE EU

Year-on-year change of GDP growth, 2019



Eurostat [tec00115]

Share of exports on GDP, 2019



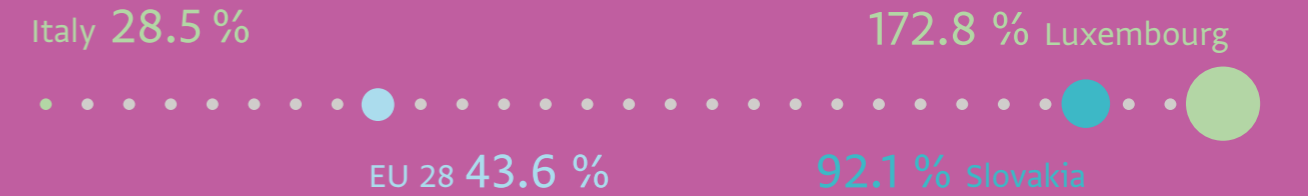
Eurostat [tet00003]

The average annual inflation rate, 2019



Eurostat [tec00118]

Share of imports on EDP, 2019



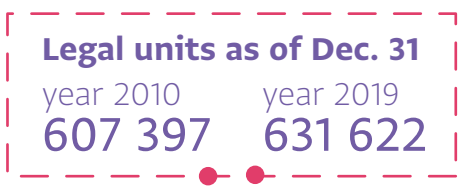
Eurostat [tet00004]





# 3) BUSINESS STATISTICS

# ORGANIZATIONAL STATISTICS



## Legal persons



## Natural persons-entrepreneurs



of which



of which



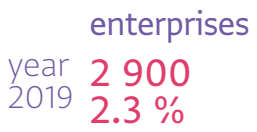
Year 2019  
**the most enterprises operated in**  
**wholesale and retail trade**  
**(18.4 %)**  
**and**  
**professional, scientific and technical activities**  
**(17.3 %).**

## Enterprises by registered number of employees

**0 - 49 employees**

**50 - 249 employees**

**250 and more employees**

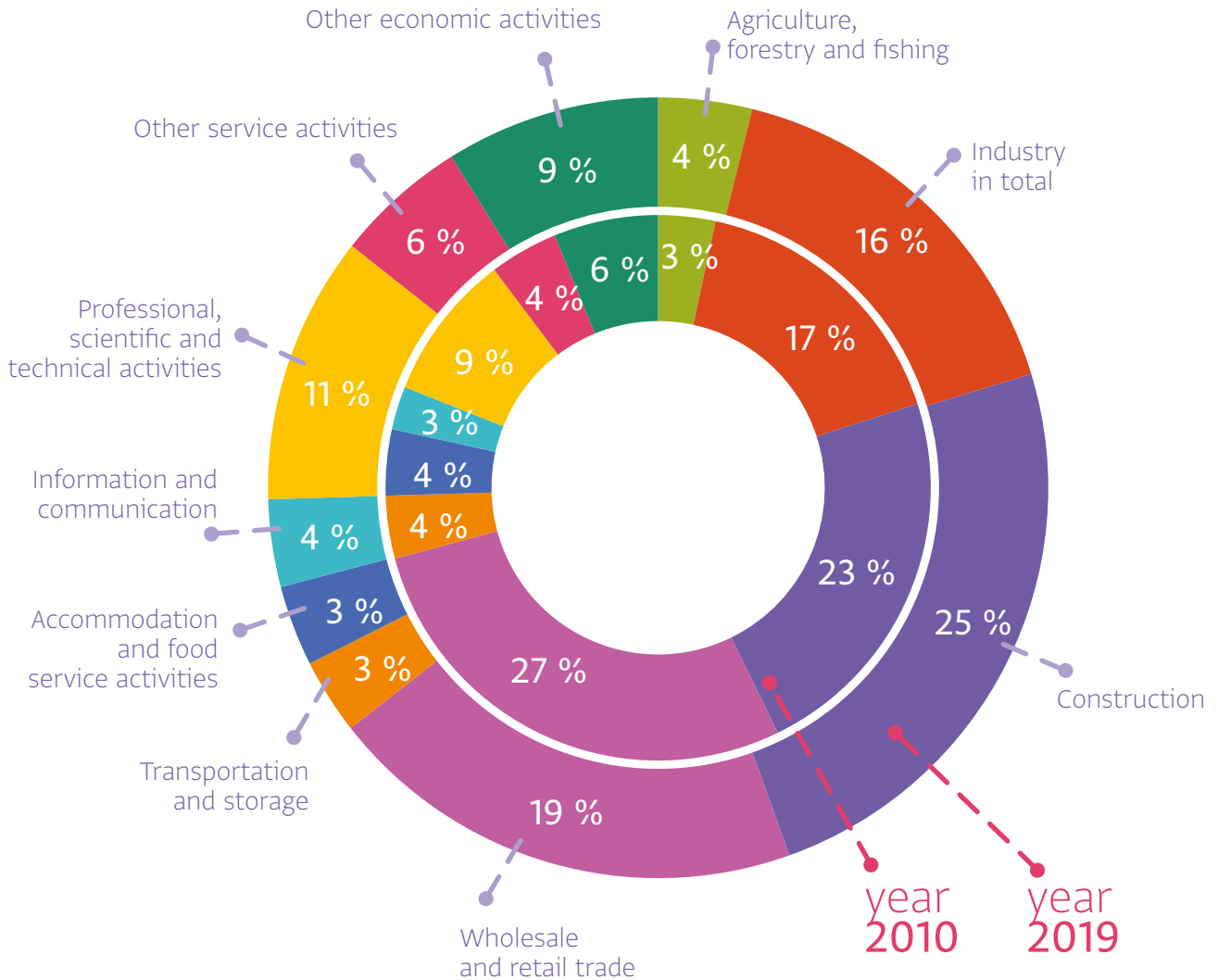


1) Including enterprises with uncertain number of employees  
 DATAcube. [og2015rs], [og3005rr], [og3009rr]



## Self-employed persons by selected economic activities

SK NACE Rev. 2



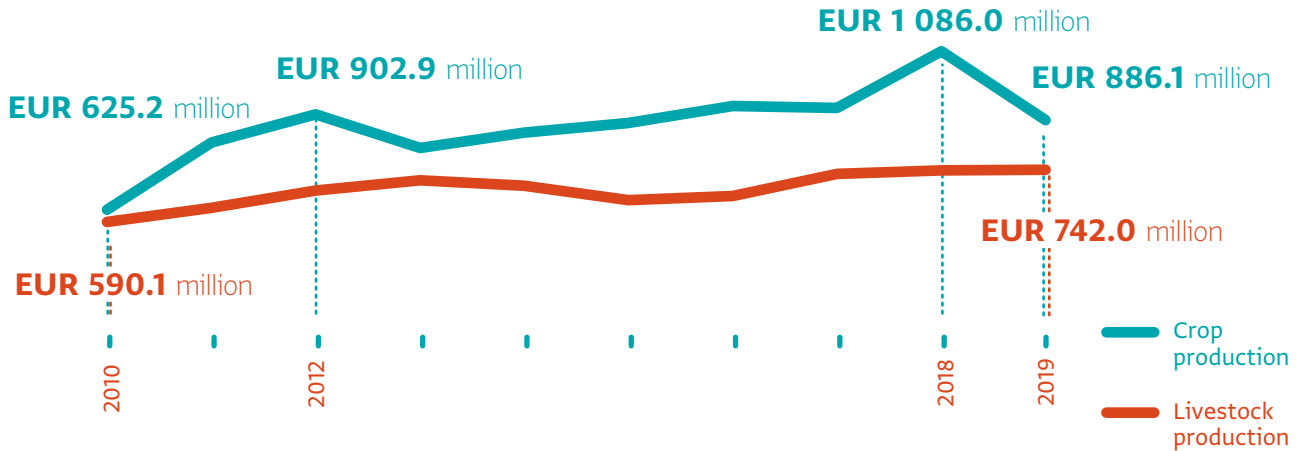




# 4) SECTORAL STATISTICS

# AGRICULTURE

## Development of receipts from sale of agricultural products



## Hectare yields of selected agricultural crops

Cereals  
year  
2019 **5.3 tons** **+ 42.8 %**  
since 2010

Oil-plants  
year  
2019 **2.6 tons** **+ 38.8 %**  
since 2010

Potatoes  
year  
2019 **22.3 tons** **+ 94.5 %**  
since 2010

Sugar  
beet  
year  
2019 **57.6 tons** **+ 5.7 %**  
since 2010

## Livestock as of Dec. 31 (thousand pieces)

Cattle  
year  
2019 **432** **- 7.5 %**  
since 2010

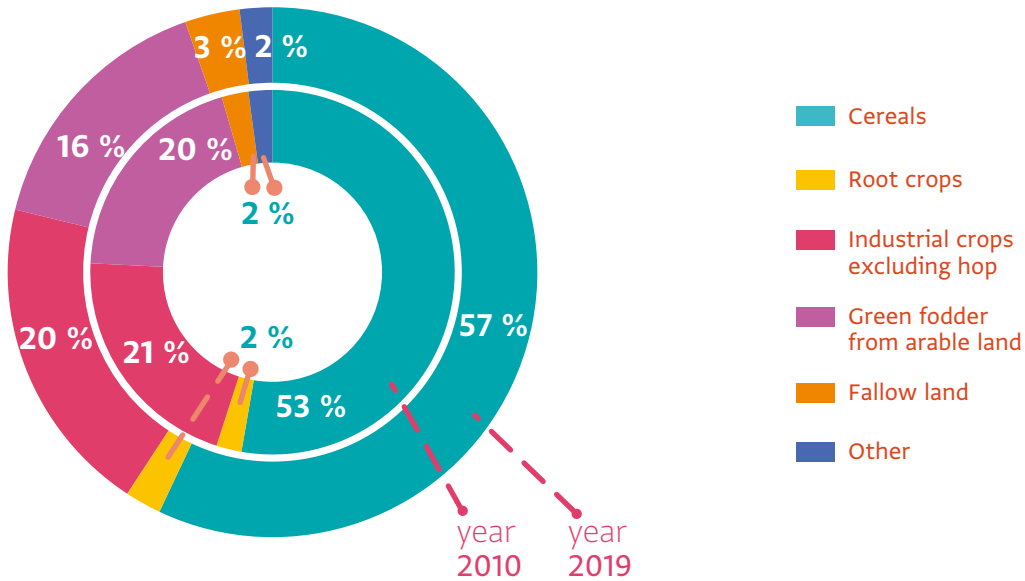
Pigs  
year  
2019 **589** **- 14.3 %**  
since 2010

Sheep  
year  
2019 **321** **- 18.7 %**  
since 2010

Poultry  
year  
2019 **13 132** **+ 1.1 %**  
since 2010

DATAcube. [pl3001rr], [pl3006rr], [pl2016rs]

### Structure of arable land utilization

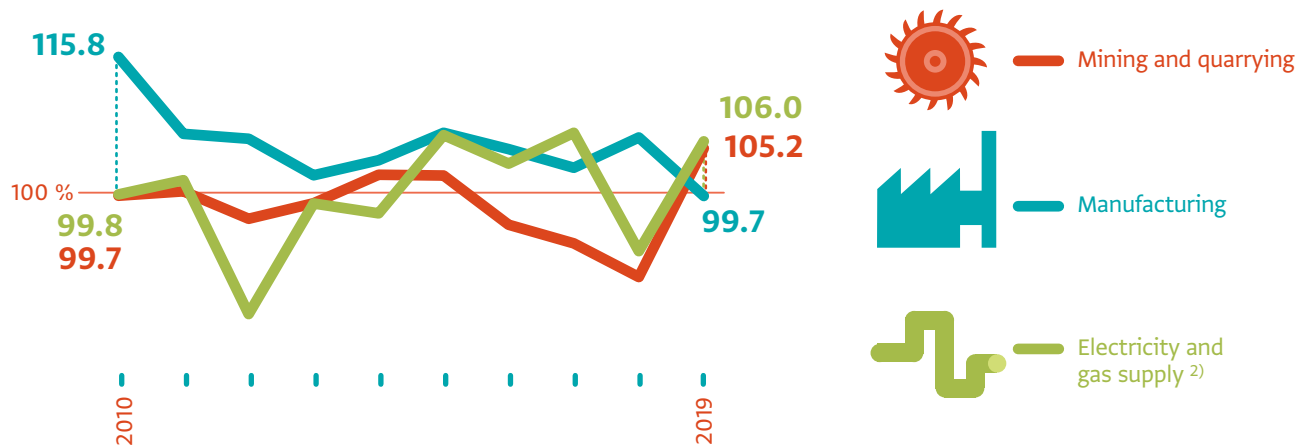


### Production of selected agricultural crops and livestock products per capita



# INDUSTRY

## Development of industrial production (previous year = 100) <sup>1)</sup>



## Turnover (EUR mill., at curr. p.)



## Average number of employed persons <sup>3)</sup>



## Average gross nominal monthly wage

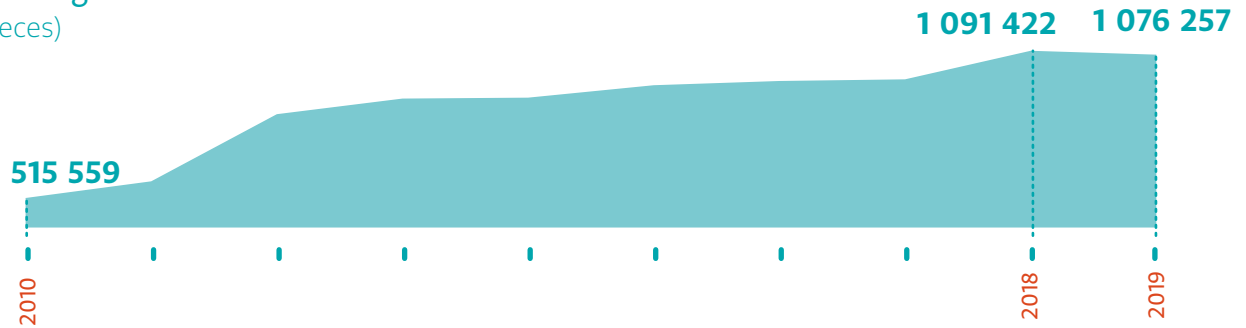


1) Data not adjusted from influence of working days number

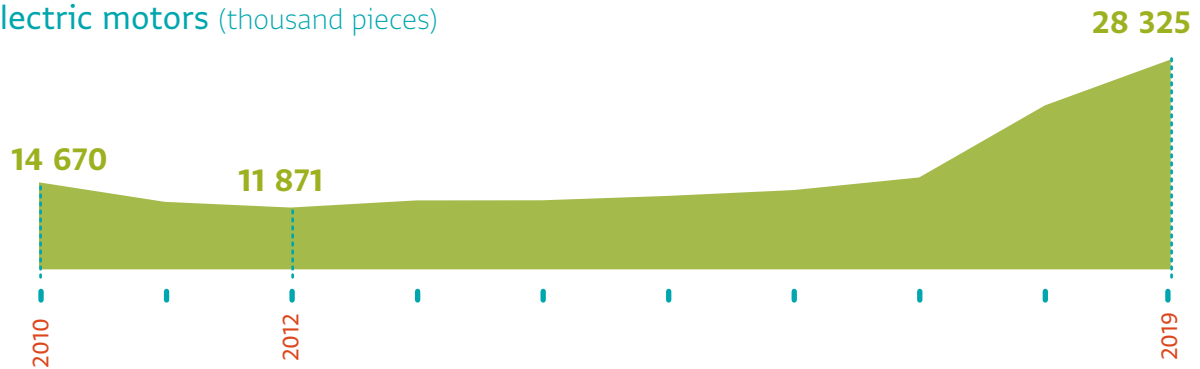
2) Employees and self-employed persons (without contributing family workers)  
 DATAcube. [pm3001rr], [pm2013rs]

## Development of production of selected industrial products

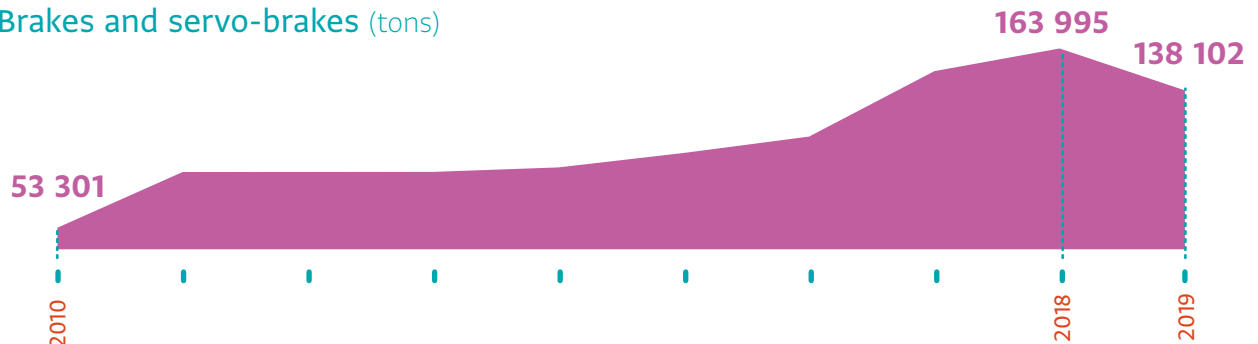
Passenger cars  
(pieces)



Electric motors (thousand pieces)



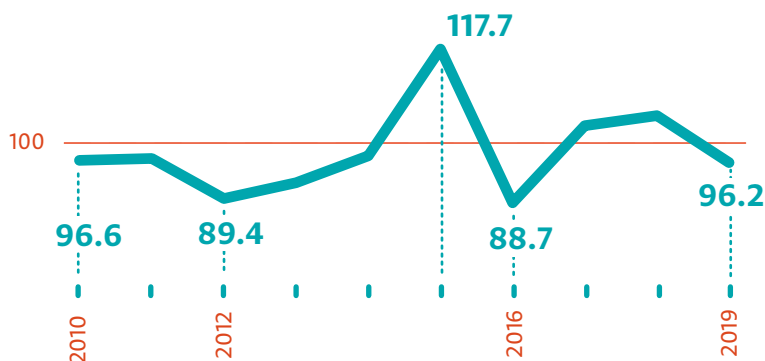
Brakes and servo-brakes (tons)



# CONSTRUCTION

## Development of construction production carried out by own employees - indices

(previous year = 100) <sup>1)</sup>



In 2019 medium-sized enterprises contributed the most turnover generation (48.2 %) in 2010 their share was by 13.6 pp lower.

Construction production carried out by own employees (at curr. p.)

year	2010	5 649.3	year	2019	5 676.0
		EUR million			EUR million

of which

- Inland construction production
 

year	2010	5 509.2	year	2019	5 397.4
		EUR million			EUR million
- Abroad construction production
 

year	2010	140.1	year	2019	278.6
		EUR million			EUR million

1) At constant prices of the year 2015



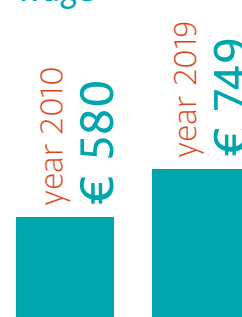
Turnover  
(EUR million, at curr. p.)



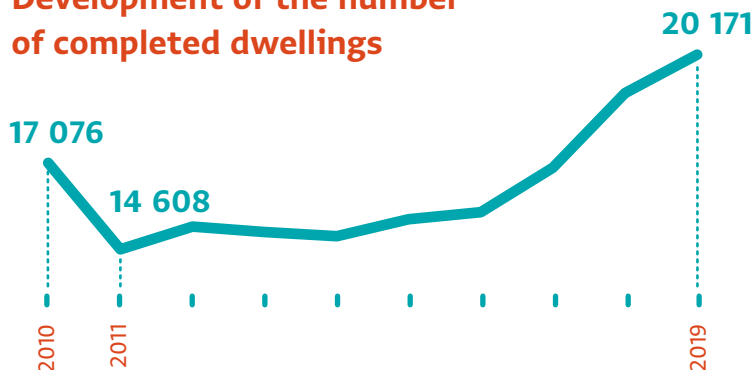
Average number of employed persons <sup>2)</sup>



Average gross nominal monthly wage



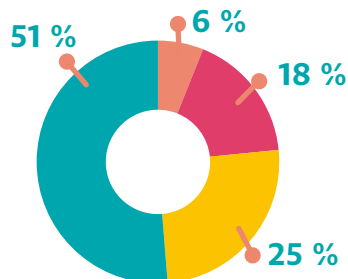
Development of the number of completed dwellings



Year 2019  
average living area  
of completed dwelling  
**69.6 m<sup>2</sup>.**

**↓ - 1.9 m<sup>2</sup>**  
since 2010

Structure of completed dwellings



- One-room and flatlets
- Three-room
- Two-room
- Four-room and more

<sup>2)</sup> Employees and self-employed persons (without contributing family workers)  
DATAcube [st2017rs], [st2001rs]

# TRANSPORT

## Development of the length of motorways as of Dec. 31



Year 2019  
**since 2010, the length of roads and motorways <sup>1)</sup> went up by 86 km to 18 071 km.**

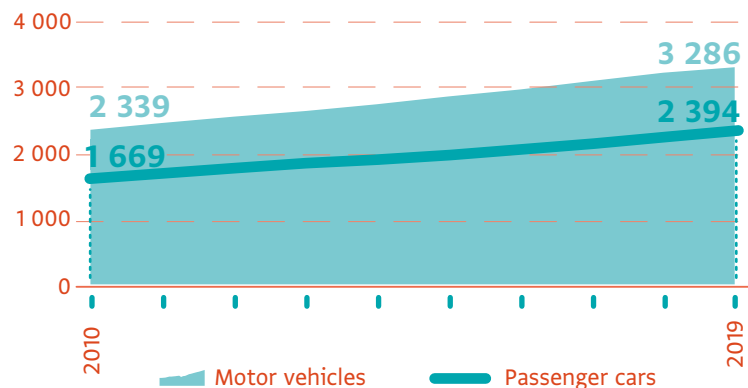
## Motorcycles



year 2019  
**117 104**  **+ 96.6 %**  
 since 2010

## Development of the number of motor vehicles as of Dec. 31

thousand pieces

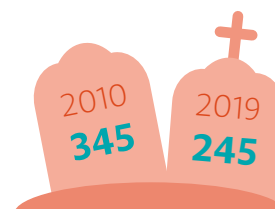


## Road traffic accidents



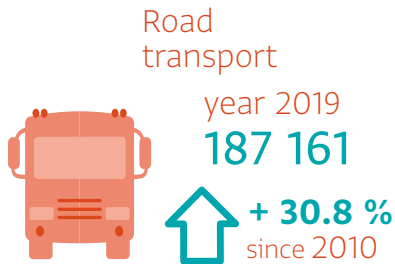
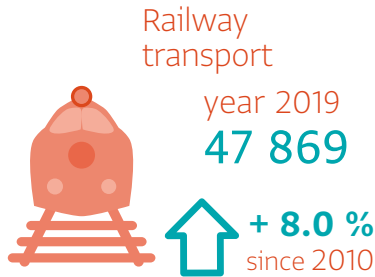
year 2019  
**13 741**  **- 36.4 %**  
 since 2010

## Persons killed at traffic accidents

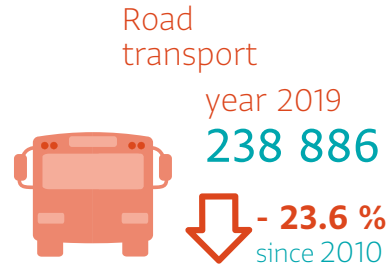
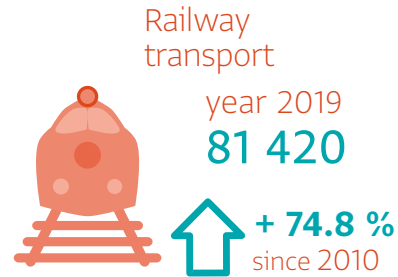


1) Including expressways, excluding feeder roads

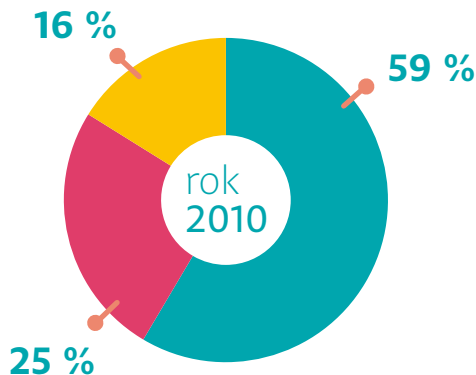
### Transport of goods (thousand tons)



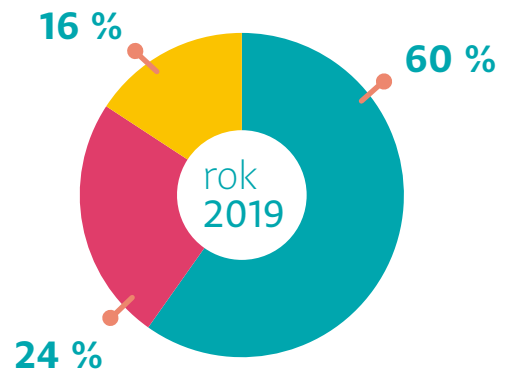
### Transported passengers (thousand persons)



### Passengers transported by city transport

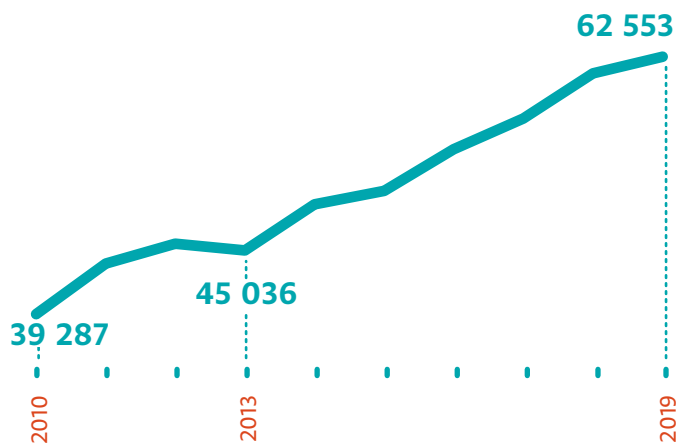


- Buses
- Trams
- Trolleybuses



# INFORMATION AND COMMUNICATION, INFORMATION SERVICES

Development of the average number of employed persons in ICT <sup>1)</sup>

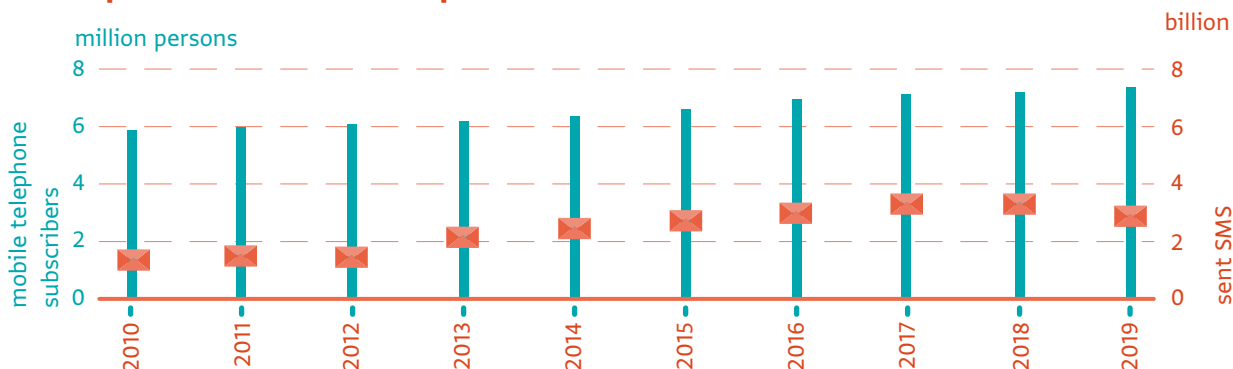


Since 2010, turnover went up by **61 %** to **EUR 7 338 million** in 2019.

Average nominal monthly wage



Development of mobile telephone subscribers and sent SMS <sup>2)</sup>

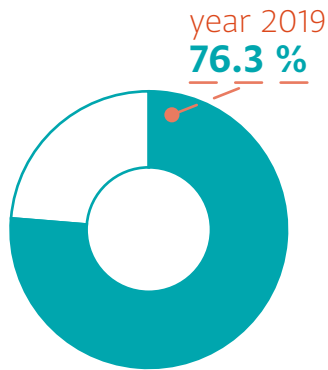


1) Employees and self-employed persons

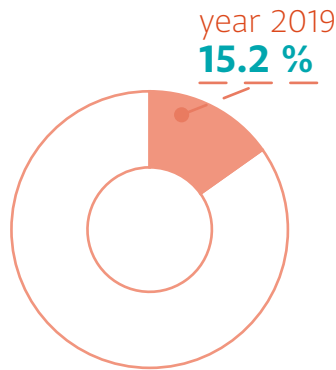
2) Including SMS sent in fixed network  
DATAcube. (ik1002rs, ik2010rs)

## ICT in enterprises

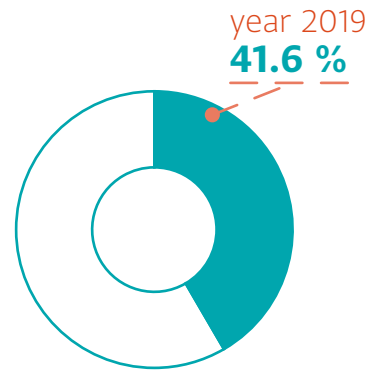
enterprises with own website



enterprises with e-Commerce Sales

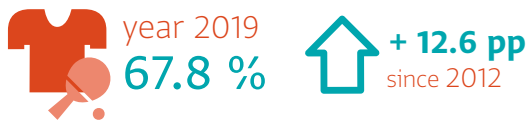


enterprises using social networks



## Kinds of goods and services purchased over the Internet <sup>3)</sup>

Clothes, sports goods



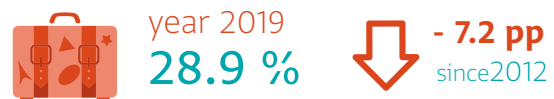
Households goods



Food, groceries



Holiday accommodation



<sup>3)</sup> % of the total number of persons purchasing via internet during last 12 months  
DATAcube. [is1002rs, is1003rs]

# INTERNAL TRADE, ACCOMMODATION AND FOOD SERVICE ACTIVITIES

## Average number of employed persons <sup>1)</sup>

### Turnover

(at curr. p.)

#### Internal trade

year 2010

**EUR 45 686** million

year 2019

**EUR 61 554** million



#### Accommodation

year 2010

**EUR 309** million

year 2019

**EUR 579** million

## Average nominal monthly wage

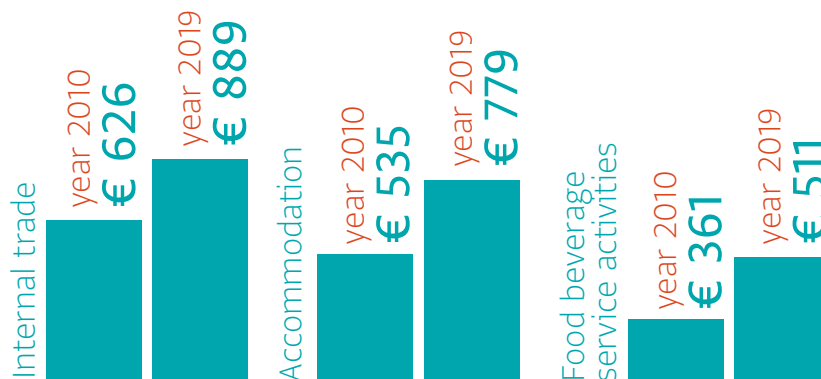
#### Food beverage service activities

year 2010

**EUR 797** million

year 2019

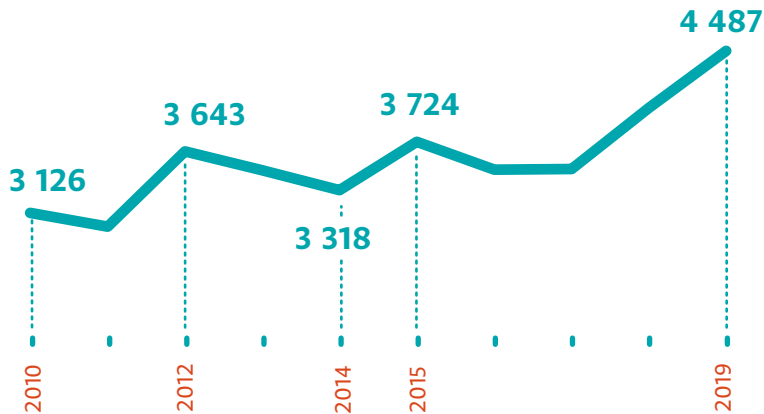
**EUR 1 449** million



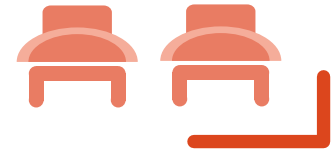
<sup>1)</sup> Employees and self-employed persons

# TOURISM

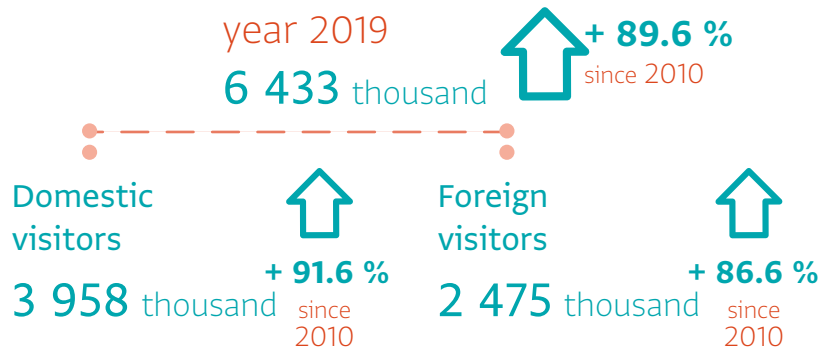
## Development of the number of accommodation establishments as of Dec. 31



The number of beds in accommodation establishments<sup>1)</sup> rose by **18.6 %** to **218 080** in 2019.



## Visitors in accommodation establishments



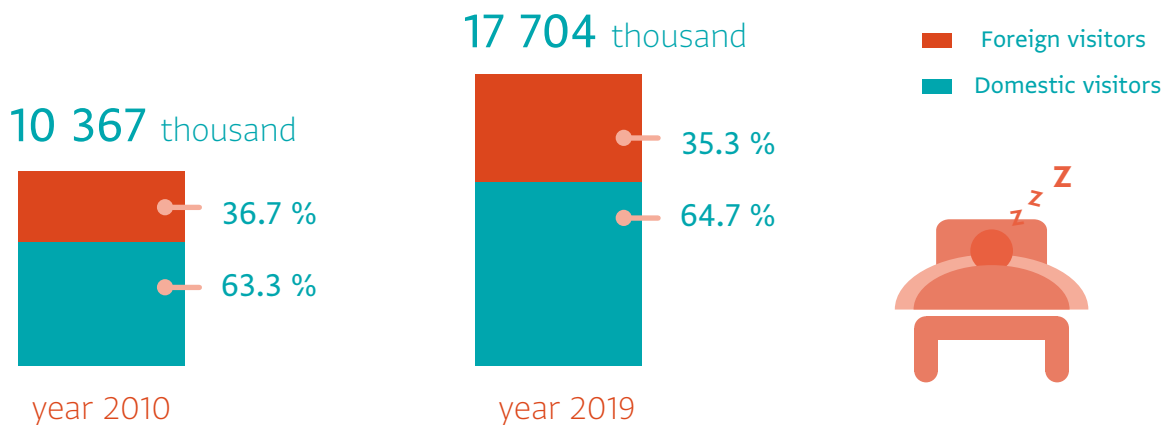
## Average price for accommodation

(per one night)

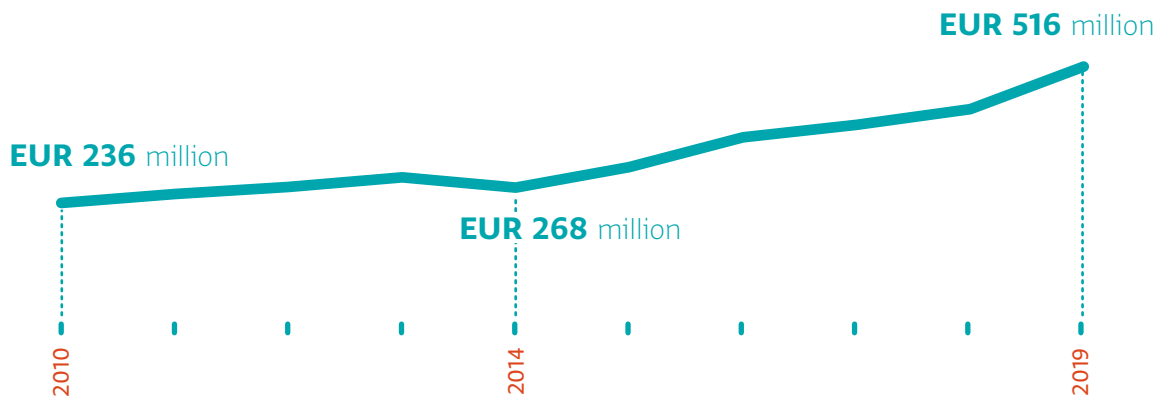


<sup>1)</sup> As of Dec. 31 including places on free area  
DATAcube. [cr2001rs], [cr3003qr] 69

## Overnight stays of visitors



## Development of receipts from accommodation services





## Visiting Slovakia

(number of foreign visitors in accommodation establishments for selected countries)

year **2010**

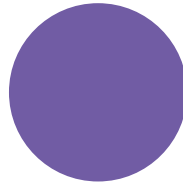
Germany  
131 674



Austria  
51 678



Czechia  
433 321



Hungary  
51 324



Poland  
161 851



United Kingdom  
40 961



Ukraine  
21 659



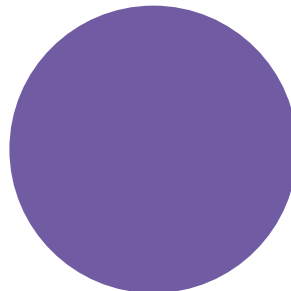
United Kingdom  
88 997



Austria  
96 613



Czechia  
777 283



Hungary  
124 306



Ukraine  
89 089



Germany  
182 378



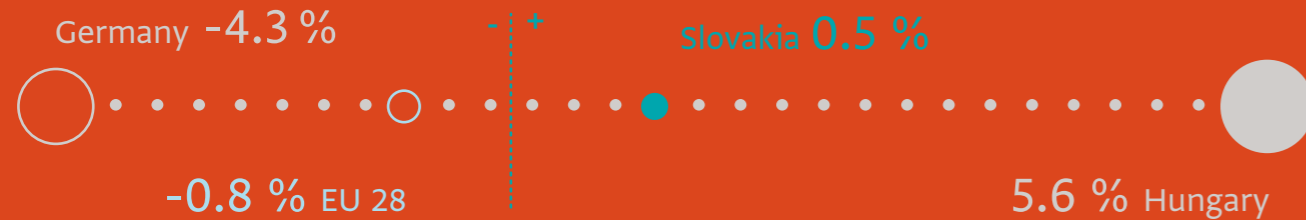
Poland  
239 866



year **2019**

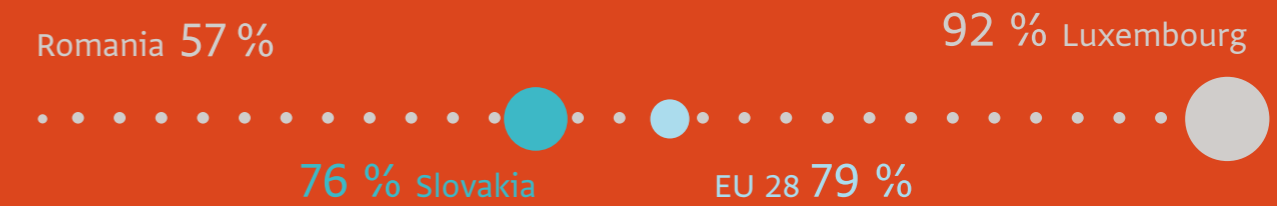
# A QUICK GLANCE AT THE EU

**Industrial production** (year-on-year change in %), 2019



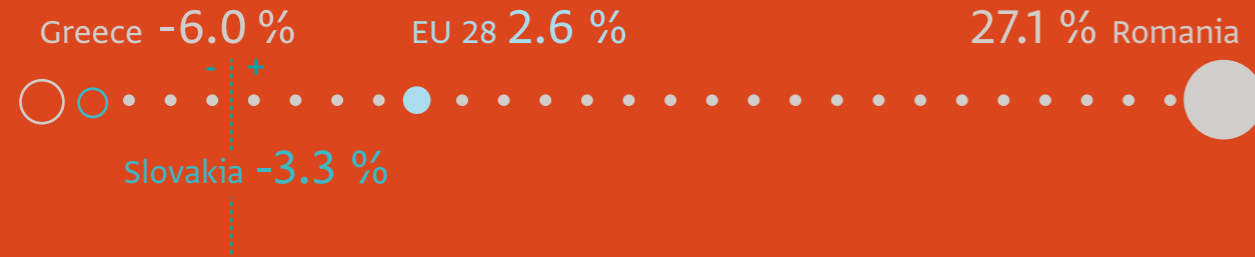
Eurostat [sts\_inpr\_a]

**Daily use of the Internet**, 2019



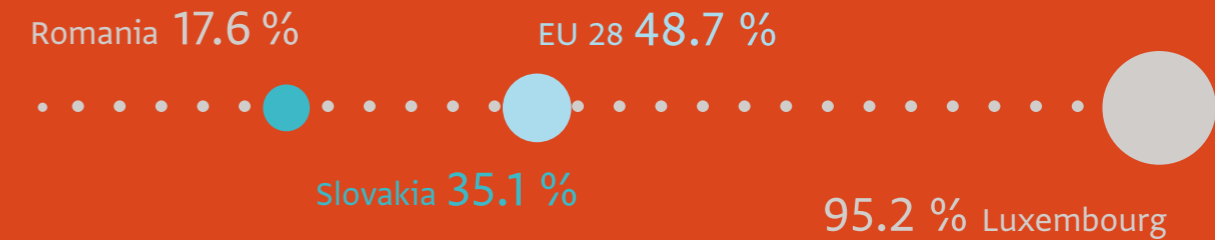
Eurostat [isoc\_bde15cua]

**Construction production** (year-on-year change in %), 2019



Eurostat [sts\_copr\_a]

**Nights spent at tourist accommodation establishments by foreign visitors** (in %), 2019



Eurostat [tin00175]  
data for Ireland and the United Kingdom not available





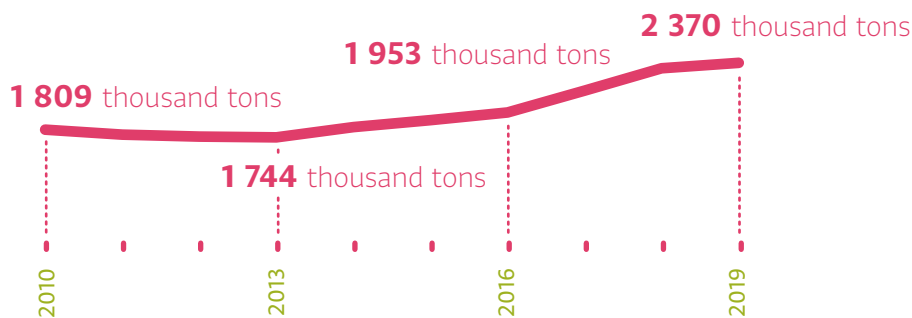




# 5) ENVIRONMENT

# ENVIRONMENT

## Development of production of municipal waste



Year 2019

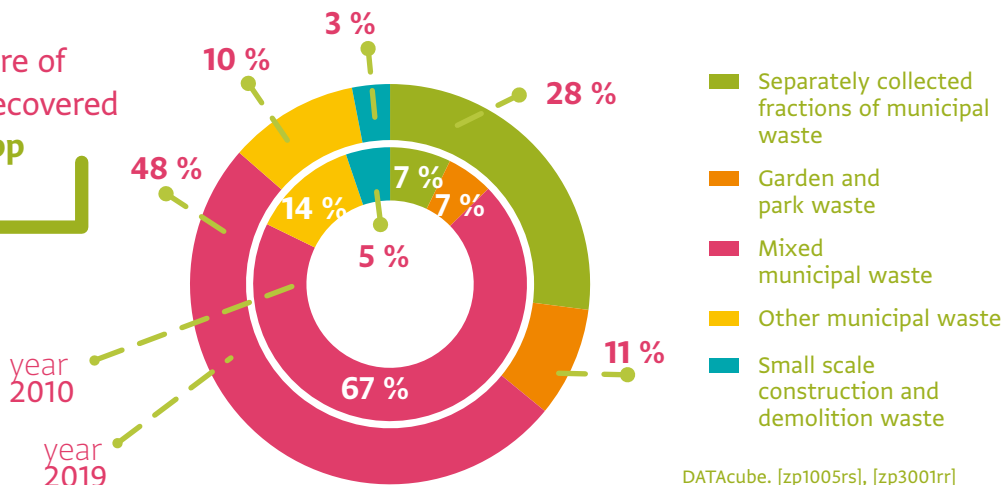
The production of municipal waste increased by **31.1 %**



## Composition of municipal waste

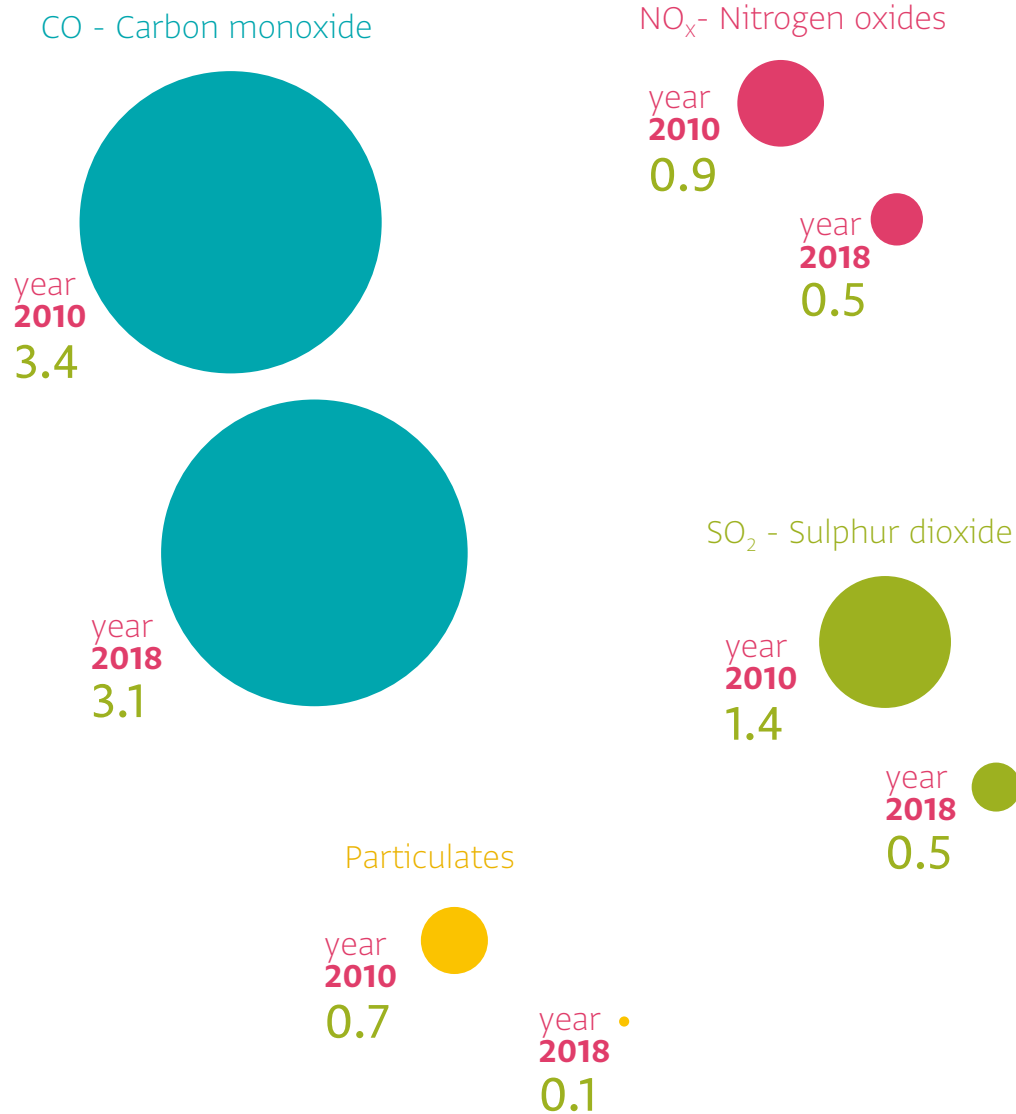
Year 2019

since 2011 the share of municipal waste recovered increased by **21.7 pp** to **45.6 %**.

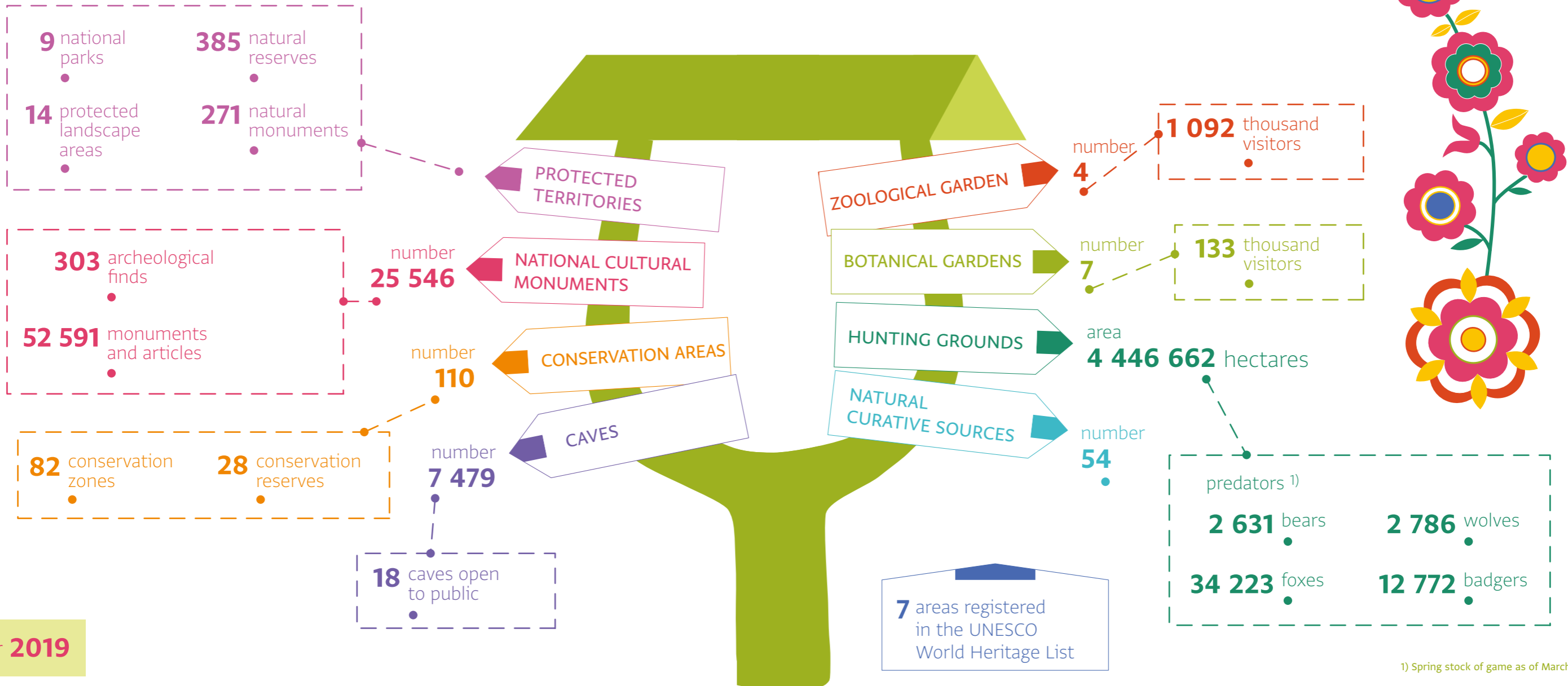


DATAcube. [zp1005rs], [zp3001rr]

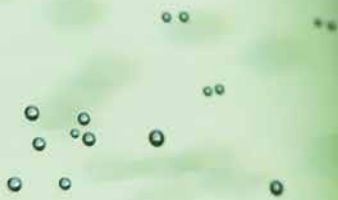
## Intensity of air pollution (tons/km<sup>2</sup>)



# BEAUTIFUL SLOVAKIA



500



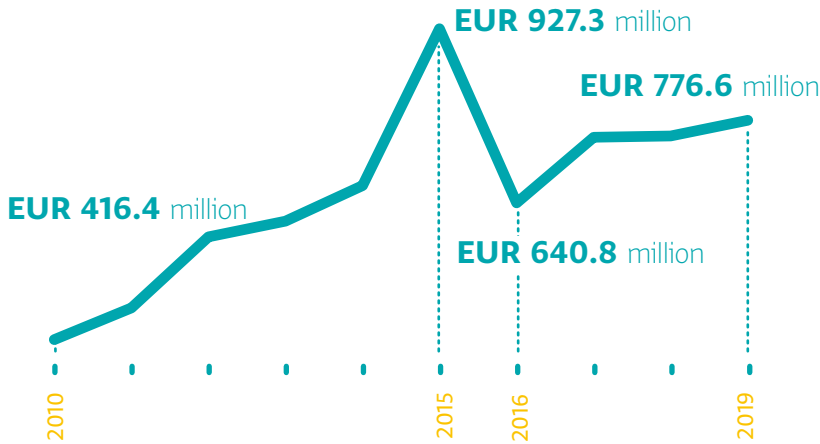




# 6) MULTI-DOMAIN STATISTICS

# RESEARCH AND DEVELOPMENT

## Development of expenditures on R&D

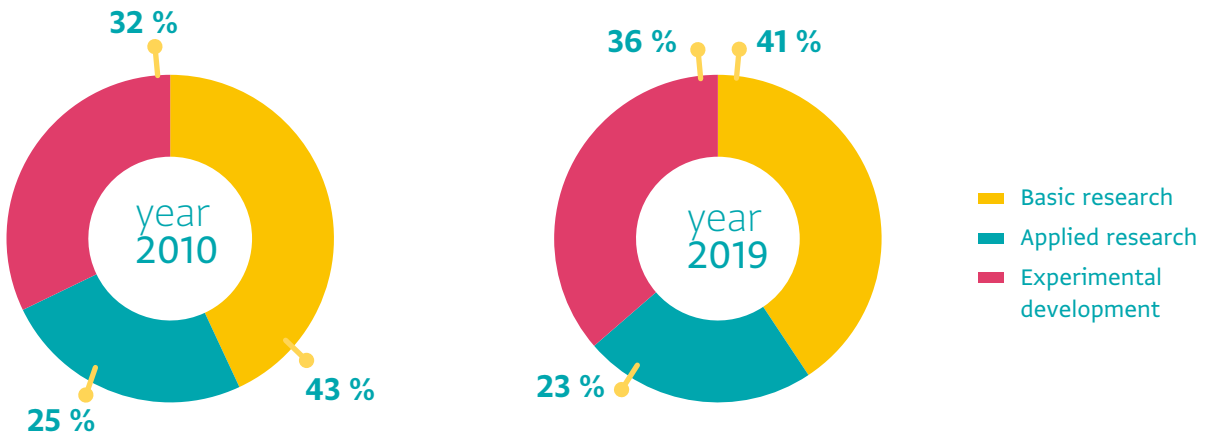


Year 2019

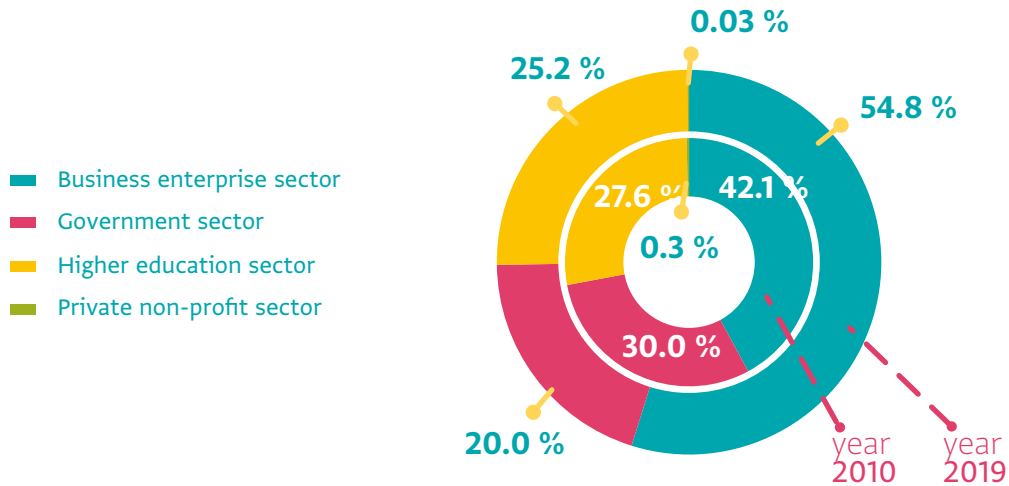
The capital expenditures **decreased by 42.7 %** to **EUR 36.1 million**.

Current expenditures **rose more than** two times since 2010, to **EUR 740.5 million**.

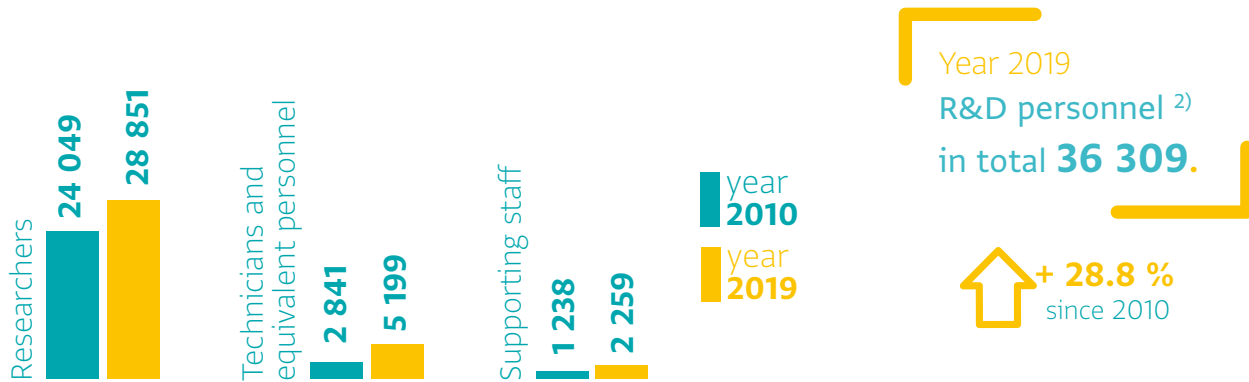
## Current expenditures on R&D by activities



## Structure of R&D expenditures by sectors of performance



## Structure of personnel and development of employment in R&D <sup>1) 2)</sup>



1) Since 2016 R&D personnel includes R&D employees, working proprietors and unpaid family workers, external R&D staff and PhD. students

2) Since 2018 R&D personnel (in natural persons) include the total number R&D personnel for reference year, up to 2018 surveyed as of Dec. 31  
 DATAcube. [vt0001rs], [vt2016rs]

## **Slovak Republic in figures 2020**

### **Authors:**

Comprehensive Publications and Regional Statistics Unit

### **Layout:**

Klára Smutná, Kristína Vargová

### **Published by:**

Statistical Office of the Slovak Republic  
Bratislava 2020

ISBN 978-80-8121-755-5 (online)

ISBN 978-80-8121-756-2 (printed version)

## SLOVAK REPUBLIC IN FIGURES 2020

Information and PR publication presents selected statistical information on demographic, economic and social development using new visualization elements.

ISBN 978-80-8121-755-5 (online)  
ISBN 978-80-8121-756-2 (printed version)

[www.statistics.sk](http://www.statistics.sk)

