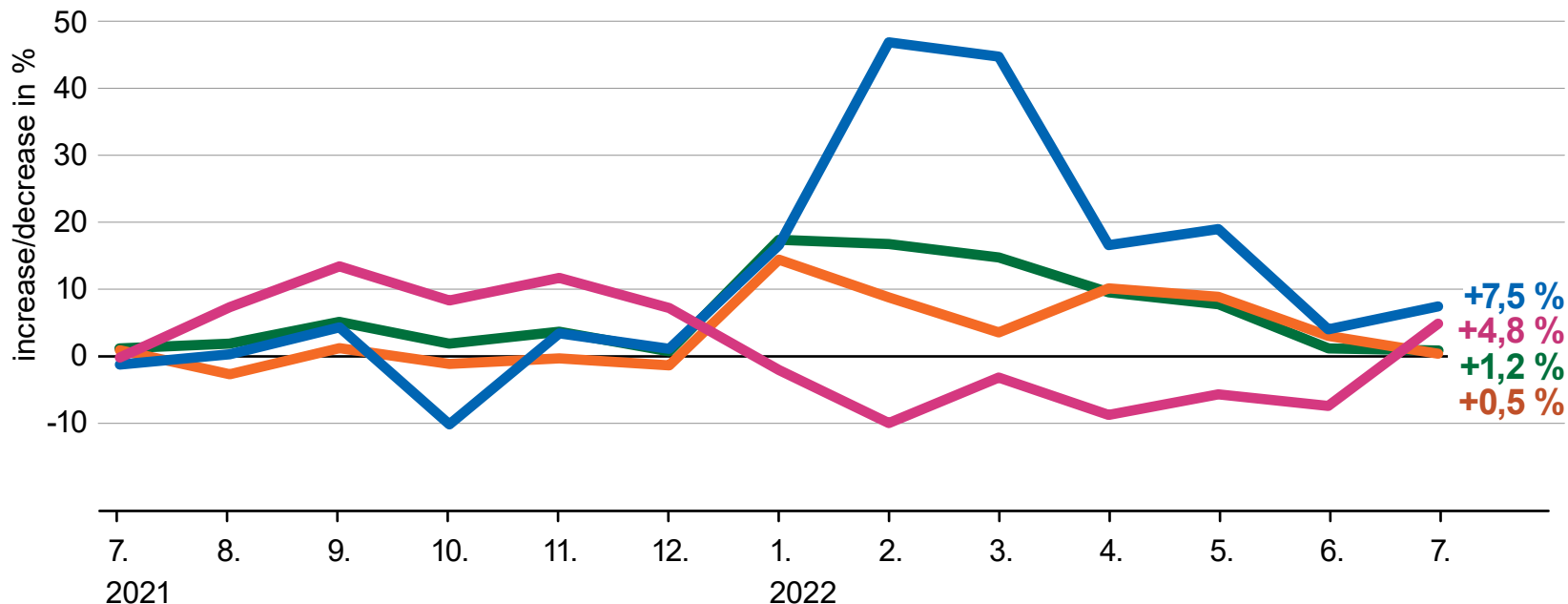


# Turnover in retail trade

(in constant prices, year-on-year, %)



STATISTICAL  
OFFICE  
OF THE SLOVAK  
REPUBLIC



## Retail trade (except of motor vehicles)

the most important components by the highest share of the total turnover:

 Hyper and supermarkets

 Specialized shops (footwear, textiles, drugstores)

 Sale not in stores, stalls or markets