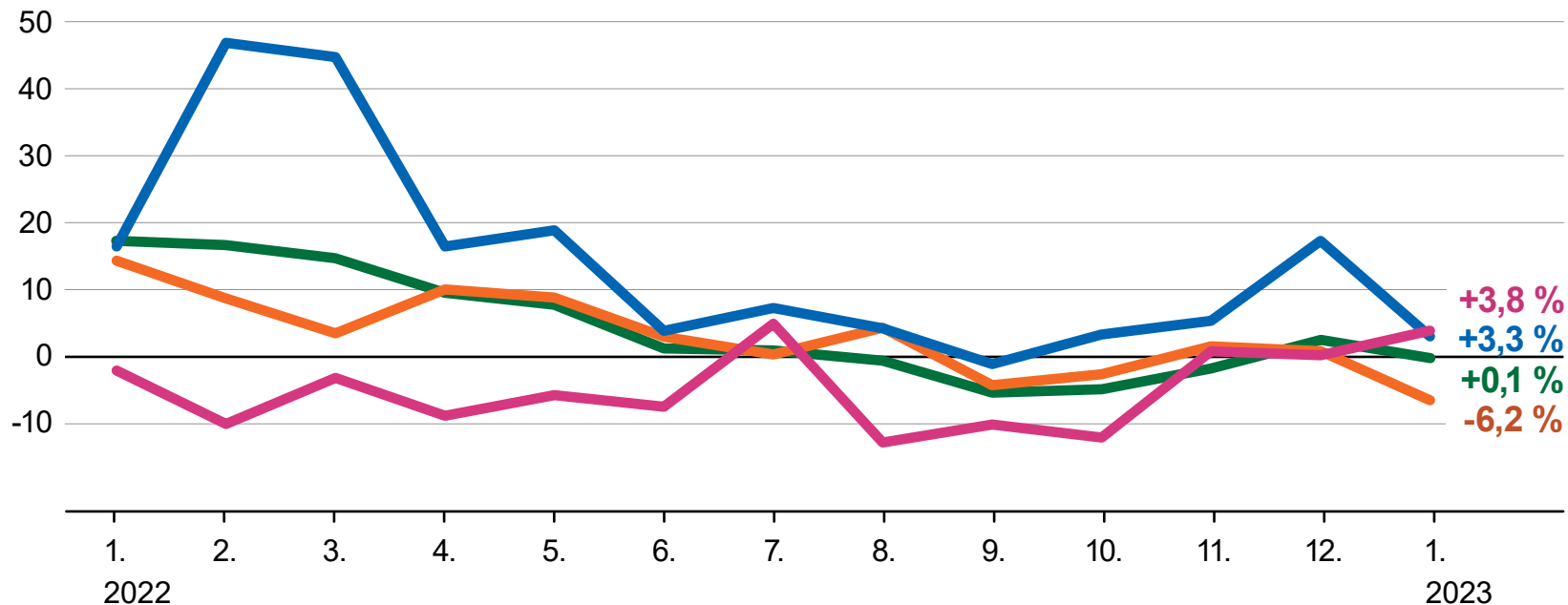


# Turnover in retail trade

(at constant prices, year-on-year change, %)



STATISTICAL  
OFFICE  
OF THE SLOVAK  
REPUBLIC



**— Retail trade (except of motor vehicles)**

the most important components by the highest share of the total turnover:

**— Hyper and supermarkets**

**— Specialized shops (footwear, textiles, drugstores)**

**— Sale not in stores, stalls or markets**