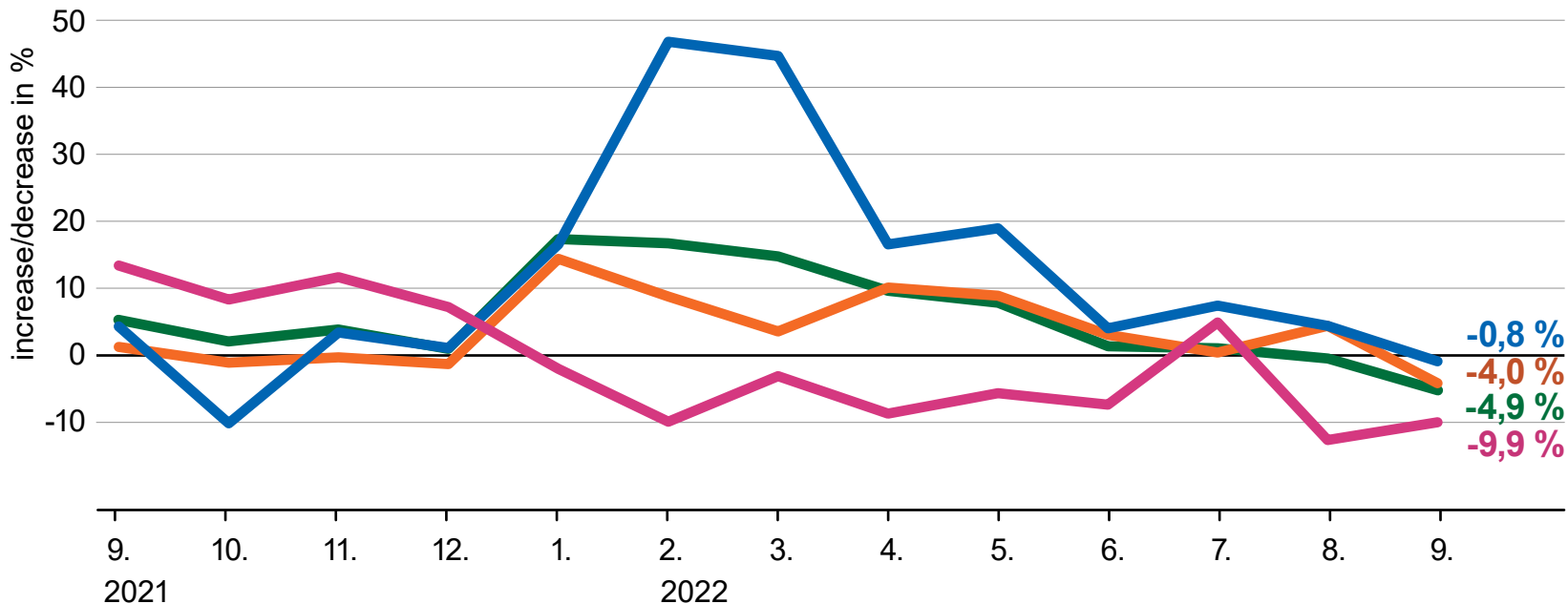


# Turnover in retail trade

(in constant prices, year-on-year, %)



STATISTICAL  
OFFICE  
OF THE SLOVAK  
REPUBLIC



**— Retail trade (except of motor vehicles)**

the most important components by the highest share of the total turnover:

— Hyper and supermarkets

— Specialized shops (footwear, textiles, drugstores)

— Sale not in stores, stalls or markets

-0,8 %

-4,0 %

-4,9 %

-9,9 %