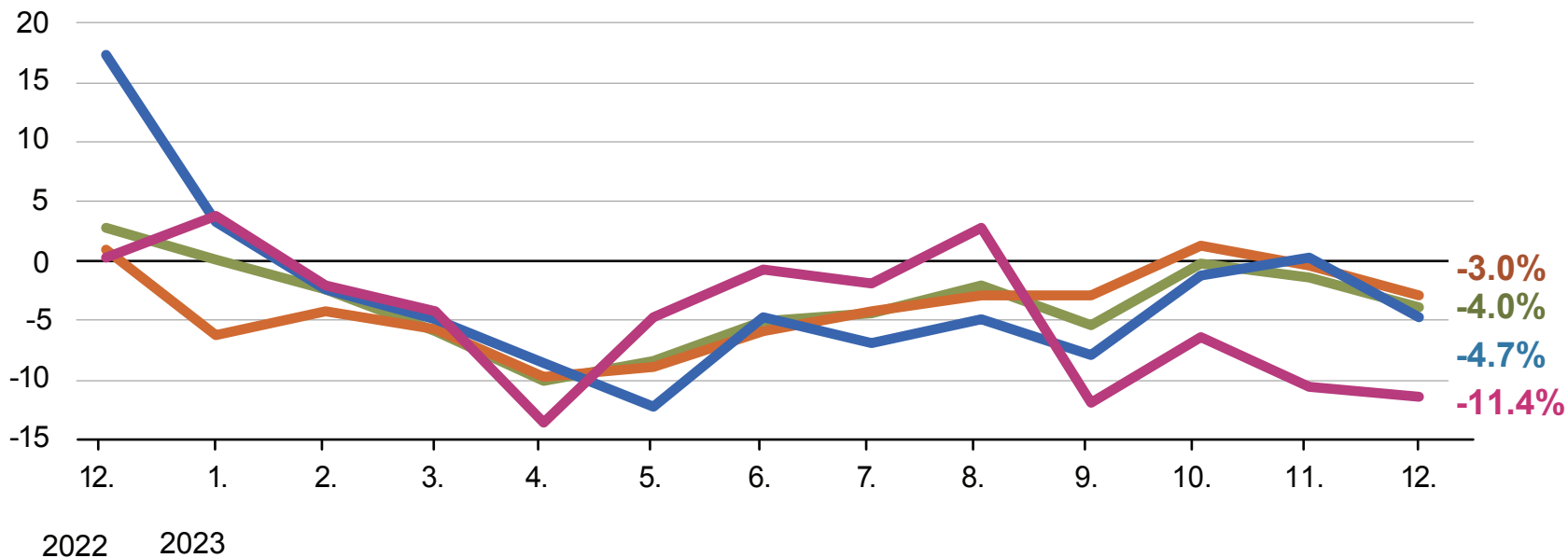


Turnover in retail trade

(at constant prices, year-on-year change, %)



STATISTICAL
OFFICE
OF THE SLOVAK
REPUBLIC



— **Retail trade (except of motor vehicles)**

the most important components by the highest share of the total turnover:

— Hyper and supermarkets

— Specialized shops (footwear, textiles, drugstores)

— Sale not in stores, stalls or markets